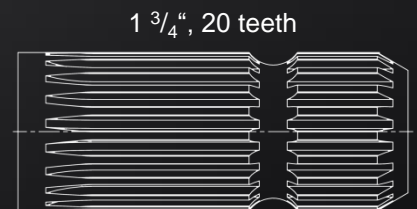
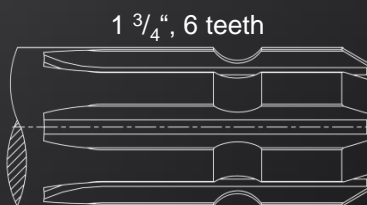


ROTEX® with p. t. o. shaft

with spline bore acc. to DIN 9611 ISO 500-3

The ROTEX coupling with p. t. o. shaft was specifically developed for connectible mechanical auxiliary drives of agricultural machinery and other mobile machines. The application range comprises, as an example, forestry mulchers, loader wagons, compactors, manure spreaders and trailers as well as rotary piston pumps and compressors which are placed on self-propelled vehicles and towed trailers.



Technical data

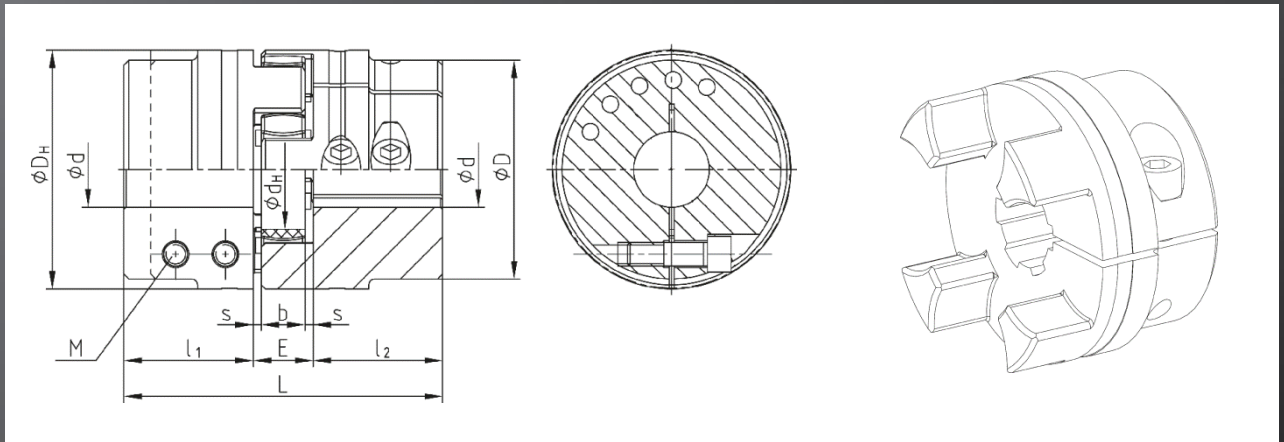
- » Spline bore acc. to DIN 9611/ISO500 (p. t. o. shaft)
- » Speed of p. t. o. shaft: 540, 750, 1,000, 1,400 rpm
- » Performance range up to 367 kW / 500 HP
- » Hub material steel S355 J2G3 (ST52-3)

Product features

- » Single- or double-cardanic
- » Damping vibrations
- » Axial plug-in
- » Short dimensions
- » Maintenance-free

ROTEX® with p. t. o. shaft

with spline bore acc. to DIN 9611 ISO 500-3



Size	Teeth	Spider T_{KN} [Nm]			Dimensions [mm]								Screw DIN EN ISO 4762		
		98 Sh-A	64 Sh-D	PA	L	l_1 ; l_2	E	b	s	D_H	D	d_H	M	T_A [Nm]	
38	1 3/8"	6/21	325	405	565	114	45	24	18	3.0	80	70	38	8	35
42	1 3/8"	6/21	450	560	785	126	50	26	20	3.0	95	85	46	10	69
48	1 3/8"	6/21	525	655	915	140	56	28	21	3.5	105	95	51	12	120
	1 3/4"	6/20													
55	1 3/8"	6/21	685	825	1200	160	65	30	22	4.0	120	110	60	12	120
	1 3/4"	6/20													
65	1 3/8"	6/21	940	1175	1645	165	65	35	26	4.5	135	115	68	12	120
	1 3/4"	6/20													
75	1 3/8"	6/21	1920	2400	2560	170	65	40	30	5.0	160	135	80	16	295
	1 3/4"	6/20													
90	1 3/4"	6/20	3600	4500	6300	205	80	45	34	5.5	200	160	100	20	580
110	1 3/4"	6/20	7200	9000	10500	205	75	55	42	6.5	255	200	127	24	1000

Other sizes on request.

Or- dering example	ROTEX® 38	98 Sh-A	2.3	1 3/8" z=6	2.3	1 3/8" z=6
	Coupling size	Spider hardness	Hub type	Finish bore	Hub type	Finish bore

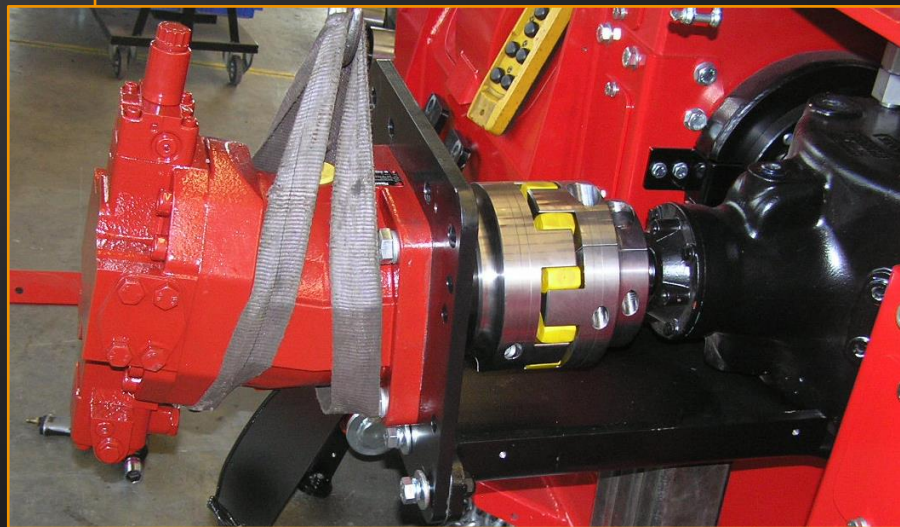
Application in the field

**ROTEX® 110 with p. t. o. shaft, 1 3/4" - 20 teeth,
between hydraulic motor and gearbox in a forestry mulcher**



Technical data / drive

- » T_{rated} = 1,000 Nm
- » n = 2,500 rpm
- » Temperature = up to 70° C



Contact



Stefan Ahlert
Industry Manager Agricultural Machinery
Phone +49 5971 798-327
Mail S.Ahlert@ktr.com