

Made for Motion



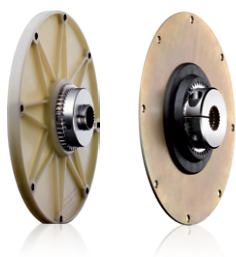
MAXIMUM PERFORMANCES UNDER HARSH OPERATING CONDITIONS

Components for construction machinery and agricultural engineering

■ Drive technology ■ Brake systems ■ Hydraulic components ■ Cooling systems

Perfect connection for construction machinery and agricultural engineering – with our drive components

<div> <div>Products</div> <div>Applications</div> </div>						
	BoWex® FLE-PA	BoWex® FLE-PAC	MONOLASTIC®	BoWex®- ELASTIC®	SINULASTIC®	Pump mounting flange
Hydraulic excavators	■	■	■		■	■
Wheel loaders	■	■	■	■	■	■
Telescopic handlers	■	■	■			■
Single drum compactors	■	■	■			■
Asphalt finishers	■	■	■	■	■	■
Forage harvesters				■	■	
Forestry machines	■	■		■	■	■
Combine harvesters	■	■		■	■	
Beet/potatoe harvesters	■	■		■	■	■
Mixer-wagons	■	■		■	■	■



BoWex® FLE-PA | BoWex® FLE-PAC Torsionally rigid flange couplings

- Torsionally rigid curved-tooth flange coupling
- Torques from 240 to 6,600 Nm
- High torsion spring stiffness, resonance-free operation
- Maintenance-free due to material combination nylon/steel
- PA flange with high mechanical strength and thermal stability
- PAC flange with excellent resistance to wear with higher stress
- Flanges with special connections available



MONOLASTIC® One-piece, flexible flange coupling

- For the drive in diesel engine/hydraulic pump up to 300 kW
- Available in various kinds of Shore hardness
- Axial plug-in in combination with pump spline shaft
- Available for SAE and DIN pump spline shaft
- Flange connection with 3 holes and SAE connection



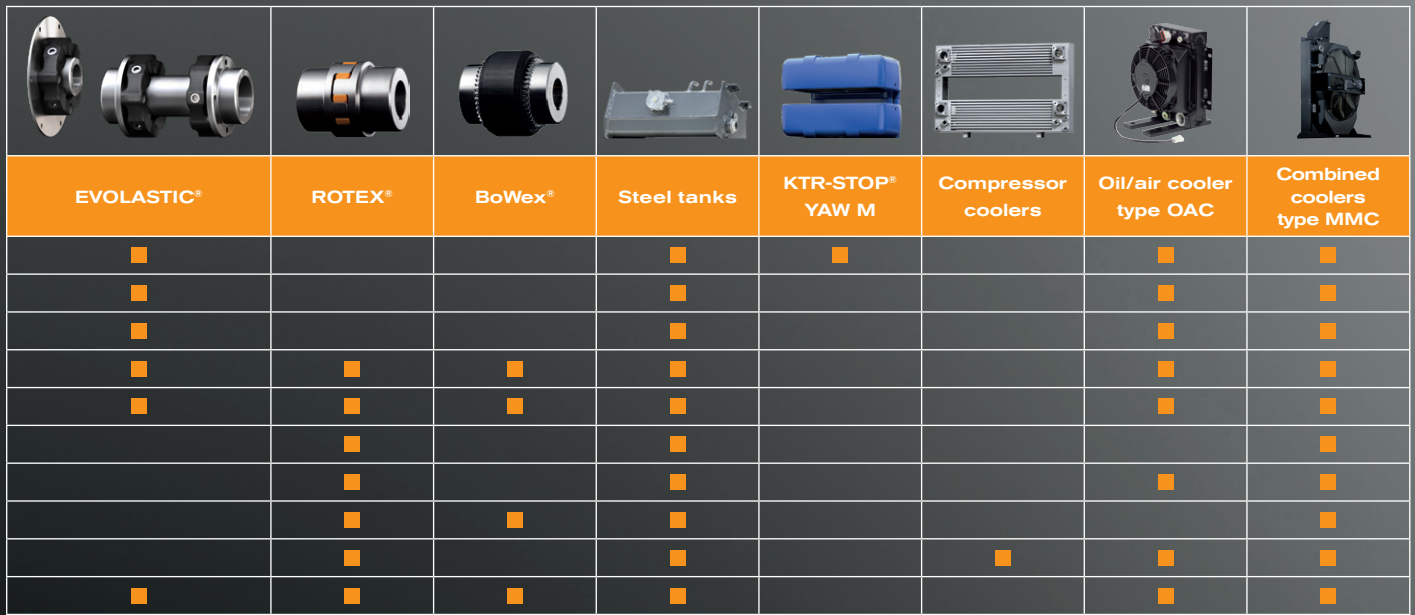
EVOLASTIC® Highly flexible coupling

- Torques up to 5,600 Nm
- Damping torsional vibrations
- Maintenance-free by material combination elastomer/steel
- Available in the Shore hardnesses „SN“ and „MN“
- Elastomer material Natural Rubber and Synthetic Rubber on request
- Available as axially pluggable and screwable



EVOLASTIC® Highly flexible intermediate shaft coupling

- Highly compensating for displacements on driving and driven side
- Available as axially pluggable and screwable
- Torques up to 5,600 Nm
- Bridging large shaft distances
- Customized lengths available
- As an example, for the use on front p. t. o. shafts



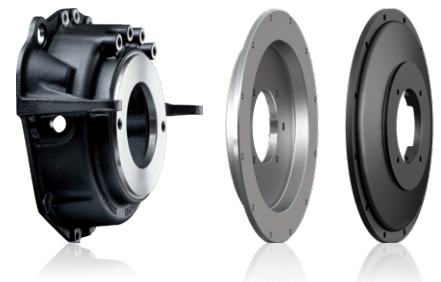
Mobile machines mostly use I. C.-engines for their drive. With hydrostatic drives hydraulic pumps are directly coupled, with mobile compressors the compressor unit is directly driven. Both units are combined by a **flange coupling**. It must comply with a number of requirements – primarily reliable power transmission.



- Engine power up to 7,500 kW
- Axial plug-in, easy assembly
- Compact dimensions
- Damping torsional vibrations
- As an example, for the drive of generators, water pumps, compressors
- Available in the Shore hardnesses 40, 50, 65 and 70 Shore A



- Maintenance-free, with overload protection
- Torques from 1,750 - 25,000 Nm
- Elastomer elements available in various materials: Natural Rubber, Synthetic Rubber, Silicone Rubber
- Axial fitting without subsequent screwing
- Extremely short mounting dimension
- Backlash-free when in operation



- For mounting hydraulic pumps on the diesel engine
- Primed/ electrogalvanized / CDP
- Mounting flanges acc. to SAE nominal sizes SAE 6 to SAE 1
- Flanges made of steel and EN-GJL-250 manufactured for hydraulic pumps with flange connections acc. to SAE-A, -B, -C, -D and E in versions with 2 holes or 4 holes
- Pump connection housings made of EN-GJL-250 to be mounted directly on the back plate of the engine



Steel tanks

Standard and special tank construction

- Standard tanks BSK, BEK, BNK series
- All standard tanks are welded on both sides
- Special tanks according to customer specifications up to 130,000 litres
- Internal corrosion protection with certified oil-resistant paint
- Cover coat available on request
- 100 % tightness test, if requested with record
- All tanks also available in material stainless steel
- Optional accessories: level indicator, sight glasses, filler necks, damping rings



KTR-STOP® YAW M

Yaw brake

- Clamping forces up to 203 kN
- Short response times due to small distance between brake pad and brake disk as well as low oil volume
- Large pad surface results in low surface pressure, low wear of pad and low temperature
- Low maintenance effort, since there are only few mobile components
- Leakage oil connections prevent leakages on the brake pad
- Brake pads made of various materials available
- Easy replacement of brake pads
- Suitable for harsh ambient conditions



ROTEX®

Torsionally flexible jaw coupling

- Flexible, damping vibrations
- Torques up to 35,000 Nm
- Axial plug-in, easy assembly
- Fail-safe
- Maintenance-free, easy visual inspection
- Spider material: T-PUR®



BoWex®

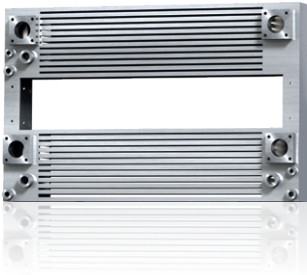
Curved-tooth gear coupling®

- Double-cardanic curved-tooth gear coupling®
- Torques from 15 to 1,000 Nm
- For all applications in the field of mechanical engineering and hydraulics
- With a sleeve made of carbon fibre reinforced polyamide
- No electrostatic charge of the nylon sleeves
- Protection against friction and shock function by design
- Wide stock programme with finish bores H7 and keyway

With heat in their element. Our cooling systems.



Compressor coolers



- Modularly designed, two-stage heat exchanger element
- An aftercooler is used to reduce the temperature and simultaneously reduce the moisture content in the air
- Heat exchanger for cooling compressed air in pressure booster systems
- Application with motors started with compressed air
- Customized design
- System engineering according to customized and application-specific requirements
- For mobile and stationary systems



Oil/air cooler type OAC

- High-performance cooler made of aluminium for a maximum static operating pressure of 26 bars
- Applicable for hydraulic oil, gear oil, lubricating oil, motor oil and water glycol
- Fan drive in 12V, 24V and hydraulic drive
- Control system available for variable-speed operation of 12V and 24 V fan drives.
- Easy to service and good options of cleaning
- With special coating for marine applications (CDP coating + acid-proof powder coating)



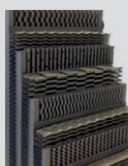
Combined coolers type MMC

- High-performance cooler made of aluminium combinable for various media
- Water, oil, charge air and fuel coolers
- Type for harsh operating conditions
- Selection according to customized requirements
- System engineering up to complex overall systems including fans and various drive technologies
- Cooler geometries adapted to the respective mounting conditions

Customized cooling systems – adapted to our customers' needs

Our **MMC combined coolers** are tailor-made and adapted to the needs and conditions of the respective application. Being used as a water cooler, **series MMC** tempers the cooling water. Being used as an oil cooler it ensures the cooling of hydraulic or gear oil, as a charge air cooler it ensures the cooling of the combustion air. Such kind of high-performance cooling system complies with all demands on the temperature regulation of media, including applications as fuel coolers.

- Designing
 - Engineering
 - Production
 - Logistics and quality
- Contact



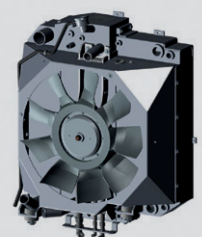
Laminae



Fans



Drive

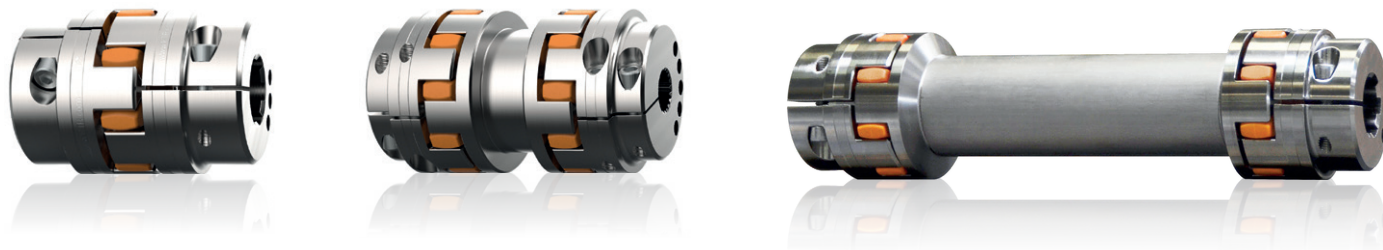


Combined coolers type MMC

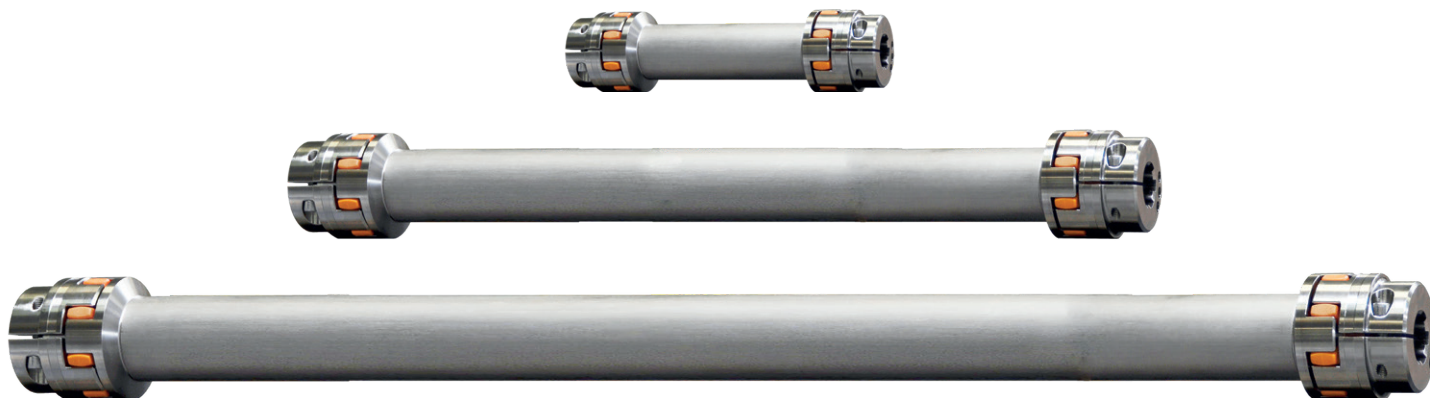
ROTEX® with p. t. o. shaft connection



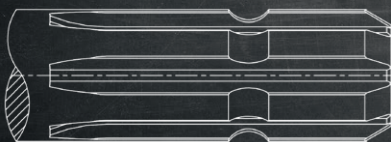
The **ROTEX® coupling** with p. t. o. shaft connection was specifically developed for connectable mechanical auxiliary drives of agricultural machines and other mobile machines. The application range comprises, as an example, forestry mulchers, loading wagons, presses, manure spreaders and back winches as well as rotary piston pumps and compressors placed on self-propelled transporters and pulled attachments.



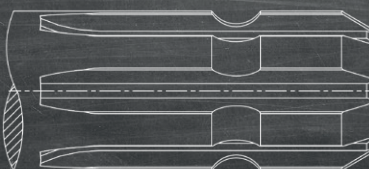
Lengths available up to 2,500 mm.



1 3/8", 6 teeth



1 3/4", 6 teeth



1 3/4", 20 teeth



Technical data

- Spline bore acc. to DIN 9611/ISO500 (p. t. o. spline)
- P. t. o. shaft speed: 540, 750, 1,000, 1,400 rpm
- Performance range up to 367 kW / 500 HP / 5000 Nm
- Hub material: steel S355J2

Product features

- Single- or double-cardanic
- Damping vibrations
- Backlash-free shaft-hub-connection
- Axial plug-in
- Compact dimensions
- Maintenance-free

Headquarters

KTR Systems GmbH

Carl-Zeiss-Str. 25

D-48432 Rheine

Phone: +49 5971 798-0

Fax: +49 5971 798-698 or 798-450

E-mail: mail@ktr.com

For you on site throughout the world: ktr.com > contact

Made for Motion

