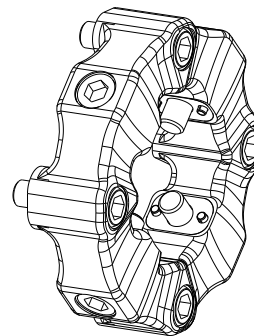


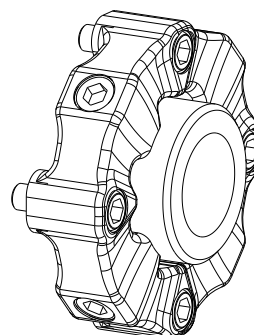


EVOLASTIC®

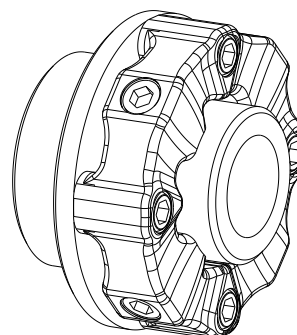
highly flexible coupling type
EP, EHP, E2HP, EFHP and their combinations



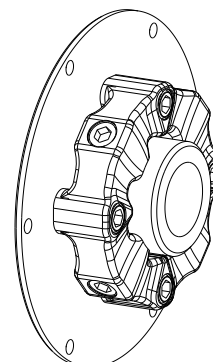
Type EP




Type EHP



Type E2HP



Type EFHP

| | | |
|---------------------------------------------------------------------------------------------------|---------------------------------------------------------------------------------------------------|------------------------------------------------|
|  KTR-Group | EVOLASTIC® Operating/Assembly instructions Type EP, EHP, E2HP and EFHP | KTR-N 48612 EN Sheet: 2 of 24 Edition: 2 |
|---------------------------------------------------------------------------------------------------|---------------------------------------------------------------------------------------------------|------------------------------------------------|

EVOLASTIC® type EP, EHP, E2HP and EFHP is a highly torsionally flexible, non-slip and backlash-free shaft and flange coupling. The coupling is capable of axial plug-in. It dampens torsional vibrations and load shocks, reduces structure-borne noise transmission and compensates for axial, radial and angular displacements above average.

Table of contents

| | | |
|----------|-----------------------------------------------------|-----------|
| 1 | Technical data | 3 |
| 1.1 | Coupling dimensions and technical data | 3 |
| 1.2 | General dimensions and torques | 7 |
| 2 | Advice | 8 |
| 2.1 | General advice | 8 |
| 2.2 | Safety and advice symbols | 8 |
| 2.3 | General hazard warnings | 8 |
| 2.4 | Proper use | 9 |
| 2.5 | Coupling selection | 9 |
| 2.6 | Reference to EC Machinery Directive 2006/42/EC | 9 |
| 3 | Storage, transport and packaging | 10 |
| 3.1 | Storage | 10 |
| 3.2 | Transport and packaging | 10 |
| 4 | Assembly | 10 |
| 4.1 | Types of hubs | 10 |
| 4.2 | Components of the couplings | 11 |
| 4.3 | Advice for finish bore | 15 |
| 4.4 | General advice for assembly | 15 |
| 4.5 | Assembly of clamping sleeves (component 8) | 16 |
| 4.6 | Assembly of the hubs (components 2 and 3) | 16 |
| 4.7 | Assembly of the flange (component 4) | 17 |
| 4.8 | Assembly of elastomer part (component 1) | 17 |
| 4.9 | Displacements - alignment of the couplings | 19 |
| 5 | Start-up | 21 |
| 6 | Breakdowns, causes and elimination | 21 |
| 7 | Disposal | 23 |
| 8 | Maintenance and service | 23 |
| 9 | Spares inventory, customer service addresses | 24 |

| | | |
|-------------------------------------------|-----------------------------------------------------|---------------------------------------------------|
| Please observe protection note ISO 16016. | Drawn: 2022-11-29 Pz/Mai Verified: 2022-12-01 Pz | Replacing: KTR-N dated 2021-02-22 Replaced by: |
|-------------------------------------------|-----------------------------------------------------|---------------------------------------------------|

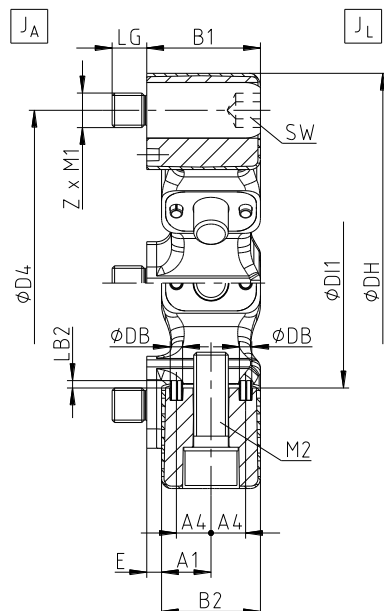
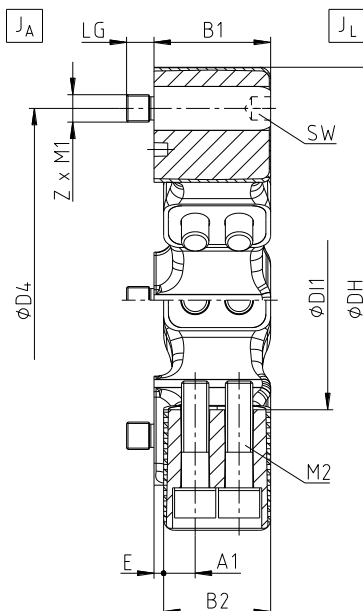
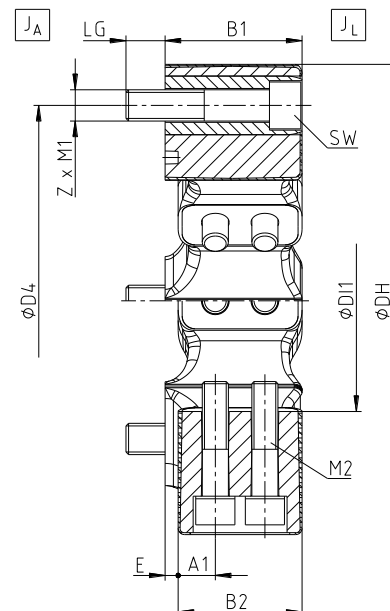

1 Technical data
1.1 Coupling dimensions and technical data
Type EP

 Illustration 1: EVOLASTIC® type EP
 (size 12 to 280)

 Illustration 2: EVOLASTIC® type EP
 (size 360)

 Illustration 3: EVOLASTIC® type EP
 (size 560)

Table 1: Dimensions - type EP

| Size | Dimensions in mm | | | | | | | | | | | | Cap screws DIN EN ISO 4762 | | |
|------|------------------|-----|-----|----|----|-----|-----------|----|----|----------|------|-----|-------------------------------|----|-----|
| | DH | DI1 | B1 | B2 | E | D4 | Z x Pitch | LG | DB | A1 | A4 | LB2 | M1 | SW | M2 |
| 12 | 122 | 60 | 32 | 28 | 4 | 100 | 3 x 120° | 10 | 4 | 14.0 | 10.0 | - | M10 | 8 | M10 |
| 24 | 150 | 70 | 42 | 36 | 6 | 125 | 3 x 120° | 12 | 5 | 18.0 | 13.5 | 5 | M12 | 10 | M12 |
| 32 | 150 | 70 | 42 | 36 | 6 | 125 | 4 x 90° | 12 | 5 | 18.0 | 13.5 | 5 | M12 | 10 | M12 |
| 48 | 170 | 85 | 46 | 40 | 6 | 140 | 4 x 90° | 14 | 5 | 20.0 | 14.0 | 5 | M14 | 12 | M14 |
| 60 | 200 | 100 | 58 | 50 | 8 | 165 | 3 x 120° | 16 | 5 | 25.0 | 18.0 | 5 | M16 | 14 | M16 |
| 86 | 200 | 100 | 58 | 50 | 8 | 165 | 4 x 90° | 16 | 5 | 25.0 | 18.0 | 5 | M16 | 14 | M16 |
| 125 | 260 | 125 | 70 | 63 | 7 | 215 | 3 x 120° | 20 | 8 | 31.5 | 22.5 | 5 | M20 | 17 | M20 |
| 200 | 260 | 125 | 70 | 63 | 7 | 215 | 4 x 90° | 20 | 8 | 31.5 | 22.5 | 5 | M20 | 17 | M20 |
| 280 | 300 | 145 | 80 | 72 | 8 | 250 | 4 x 90° | 20 | 8 | 36.0 | 22.5 | 5 | M20 | 17 | M20 |
| 360 | 340 | 160 | 85 | 78 | 7 | 280 | 4 x 90° | 20 | - | 2 x 23.0 | - | - | M20 | 17 | M20 |
| 560 | 363 | 170 | 105 | 95 | 10 | 300 | 4 x 90° | 20 | - | 2 x 28.5 | - | - | M24 | 19 | M20 |

Table 2: Technical data - type EP

| Size | Total weight of coupling in kg | Mass moment of coupling in kgm² | |
|------|--------------------------------|---------------------------------|-------|
| | | JA | JL |
| 12 | 0.55 | 0.001 | 0.001 |
| 24 | 1.03 | 0.002 | 0.001 |
| 32 | 1.26 | 0.003 | 0.002 |
| 48 | 1.74 | 0.005 | 0.003 |
| 60 | 1.52 | 0.009 | 0.007 |
| 86 | 3.08 | 0.010 | 0.008 |
| 125 | 5.16 | 0.028 | 0.022 |
| 200 | 6.35 | 0.036 | 0.028 |
| 280 | 8.71 | 0.068 | 0.050 |
| 360 | 12.21 | 0.110 | 0.096 |
| 560 | 17.67 | 0.203 | 0.145 |



In case if a dimensional drawing was prepared for the coupling, the dimensions specified have to be primarily observed.

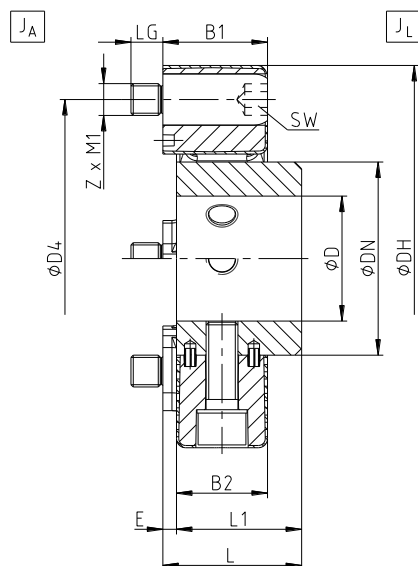
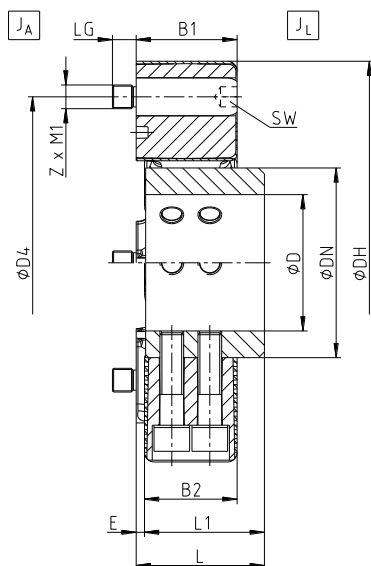
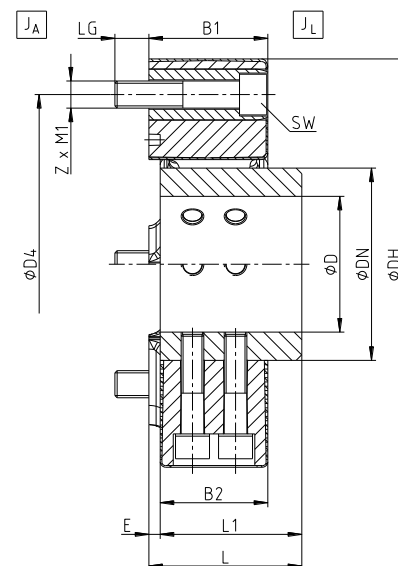

1 Technical data
1.1 Coupling dimensions and technical data
Type EHP

 Illustration 4: EVOLASTIC® type EHP
(size 12 to 280)

 Illustration 5: EVOLASTIC® type EHP
(size 360)

 Illustration 6: EVOLASTIC® type EHP
(size 560)

Table 3: Dimensions - type EHP

| Size | Dimensions in mm | | | | | | | | | | | | Cap screws DIN EN ISO 4762 |
|------|-----------------------|-----|-----|-----|----|----|-----|-----|-----|-----------|----|----|-------------------------------|
| | Max. finish bore D | DH | DN | B1 | B2 | E | L | L1 | D4 | Z x Pitch | LG | SW | M1 |
| 12 | 38 | 122 | 60 | 32 | 28 | 4 | 46 | 42 | 100 | 3 x 120° | 10 | 8 | M10 |
| 24 | 46 | 150 | 70 | 42 | 36 | 6 | 56 | 50 | 125 | 3 x 120° | 12 | 10 | M12 |
| 32 | 46 | 150 | 70 | 42 | 36 | 6 | 56 | 50 | 125 | 4 x 90° | 12 | 10 | M12 |
| 48 | 55 | 170 | 85 | 46 | 40 | 6 | 61 | 55 | 140 | 4 x 90° | 14 | 12 | M14 |
| 60 | 65 | 200 | 100 | 58 | 50 | 8 | 74 | 66 | 165 | 3 x 120° | 16 | 14 | M16 |
| 86 | 65 | 200 | 100 | 58 | 50 | 8 | 74 | 66 | 165 | 4 x 90° | 16 | 14 | M16 |
| 125 | 85 | 260 | 125 | 70 | 63 | 7 | 88 | 80 | 215 | 3 x 120° | 20 | 17 | M20 |
| 200 | 85 | 260 | 125 | 70 | 63 | 7 | 88 | 80 | 215 | 4 x 90° | 20 | 17 | M20 |
| 280 | 105 | 300 | 145 | 80 | 72 | 8 | 102 | 94 | 250 | 4 x 90° | 20 | 17 | M20 |
| 360 | 115 | 340 | 160 | 85 | 78 | 7 | 108 | 100 | 280 | 4 x 90° | 20 | 17 | M20 |
| 560 | 120 | 363 | 170 | 105 | 95 | 10 | 135 | 125 | 300 | 4 x 90° | 30 | 19 | M24 |

Table 4: Technical data - type EHP

| Size | Total weight with maximum bore of coupling in kg | Mass moment of inertia with maximum bore of coupling in kgm² | |
|------|-----------------------------------------------------|--------------------------------------------------------------|----------------|
| | | J _A | J _L |
| 12 | 1.09 | 0.001 | 0.001 |
| 24 | 1.85 | 0.002 | 0.002 |
| 32 | 2.08 | 0.003 | 0.003 |
| 48 | 3.07 | 0.004 | 0.005 |
| 60 | 4.79 | 0.009 | 0.010 |
| 86 | 5.32 | 0.010 | 0.012 |
| 125 | 9.15 | 0.028 | 0.024 |
| 200 | 10.30 | 0.036 | 0.039 |
| 280 | 14.29 | 0.068 | 0.076 |
| 360 | 19.44 | 0.110 | 0.131 |
| 560 | 28.41 | 0.203 | 0.203 |



In case if a dimensional drawing was prepared for the coupling, the dimensions specified have to be primarily observed.

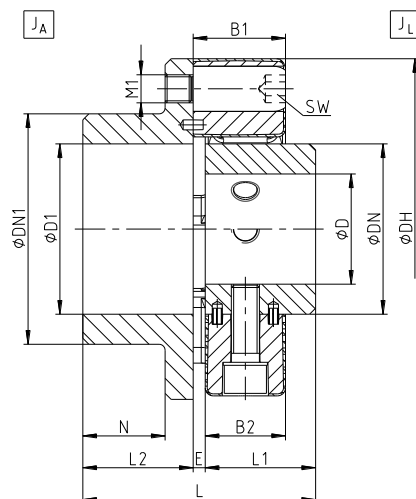
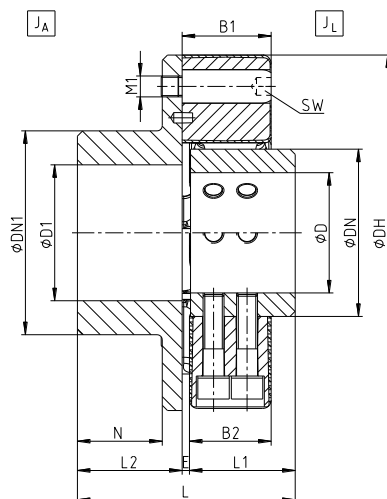
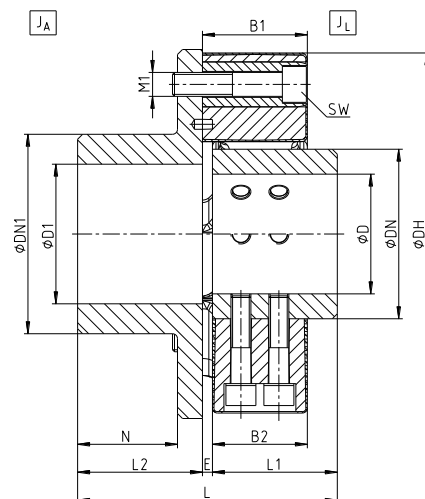

1 Technical data
1.1 Coupling dimensions and technical data
Type E2HP

 Illustration 7: EVOLASTIC® type E2HP
 (size 12 to 280)

 Illustration 8: EVOLASTIC® type E2HP
 (size 360)

 Illustration 9: EVOLASTIC® type E2HP
 (size 560)

Table 5: Dimensions - type E2HP

| Size | Dimensions in mm | | | | | | | | | | | | | Cap screws DIN EN ISO 4762 |
|------|------------------|-----|-----|-----|-----|-----|----|----|-----|-----|-----|-----|----|-------------------------------|
| | Max. finish bore | | DH | DN | DN1 | B1 | B2 | E | N | L | L1 | L2 | SW | M1 |
| | D | D1 | | | | | | | | | | | | |
| 12 | 38 | 55 | 122 | 60 | 80 | 32 | 28 | 4 | 32 | 88 | 42 | 42 | 8 | M10 |
| 24 | 46 | 70 | 150 | 70 | 100 | 42 | 36 | 6 | 38 | 106 | 50 | 50 | 10 | M12 |
| 32 | 46 | 70 | 150 | 70 | 100 | 42 | 36 | 6 | 38 | 106 | 50 | 50 | 10 | M12 |
| 48 | 55 | 85 | 170 | 85 | 115 | 46 | 40 | 6 | 41 | 116 | 55 | 55 | 12 | M14 |
| 60 | 65 | 100 | 200 | 100 | 140 | 58 | 50 | 8 | 50 | 140 | 66 | 66 | 14 | M16 |
| 86 | 65 | 100 | 200 | 100 | 140 | 58 | 50 | 8 | 50 | 140 | 66 | 66 | 14 | M16 |
| 125 | 85 | 110 | 260 | 125 | 160 | 70 | 63 | 7 | 60 | 168 | 80 | 80 | 17 | M20 |
| 200 | 85 | 110 | 260 | 125 | 160 | 70 | 63 | 7 | 60 | 168 | 80 | 80 | 17 | M20 |
| 280 | 105 | 110 | 300 | 145 | 160 | 80 | 72 | 8 | 70 | 192 | 94 | 90 | 17 | M20 |
| 360 | 115 | 130 | 340 | 160 | 195 | 85 | 78 | 7 | 80 | 208 | 100 | 100 | 17 | M20 |
| 560 | 120 | 140 | 363 | 170 | 200 | 105 | 95 | 10 | 100 | 260 | 125 | 125 | 19 | M24 |

Table 6: Technical data - type E2HP

| Size | Total weight with maximum bore of coupling in kg | Mass moment of inertia with maximum bore of coupling in kgm ² | |
|------|--------------------------------------------------|--------------------------------------------------------------------------|----------------|
| | | J _A | J _L |
| 12 | 2.44 | 0.003 | 0.001 |
| 24 | 4.26 | 0.009 | 0.002 |
| 32 | 4.53 | 0.009 | 0.003 |
| 48 | 6.41 | 0.016 | 0.005 |
| 60 | 10.62 | 0.038 | 0.010 |
| 86 | 11.13 | 0.039 | 0.012 |
| 125 | 20.55 | 0.115 | 0.034 |
| 200 | 21.65 | 0.123 | 0.039 |
| 280 | 29.05 | 0.208 | 0.073 |
| 360 | 41.25 | 0.368 | 0.104 |
| 560 | 58.62 | 0.640 | 0.203 |



In case if a dimensional drawing was prepared for the coupling, the dimensions specified have to be primarily observed.

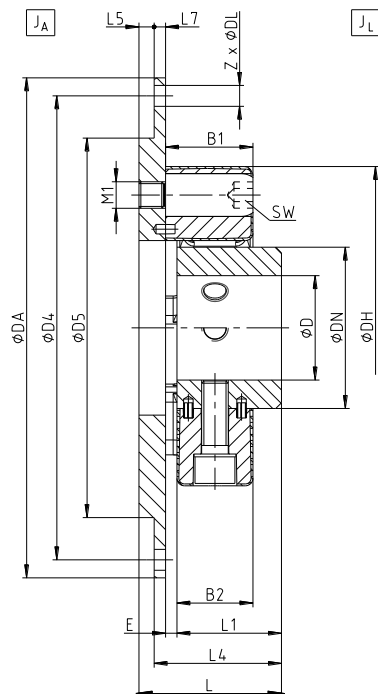
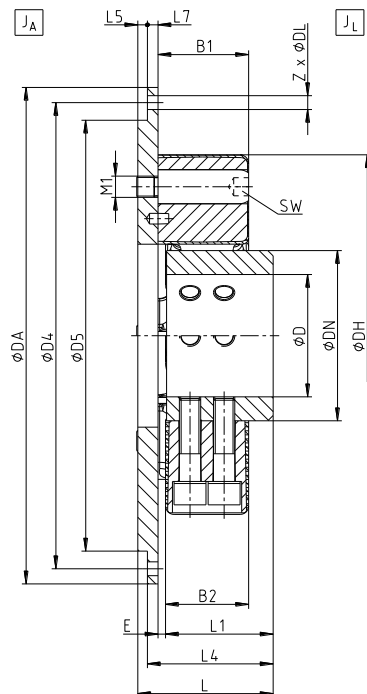
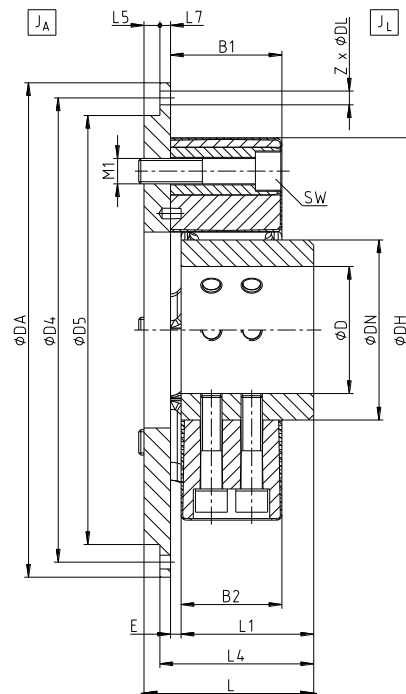

1 Technical data
1.1 Coupling dimensions and technical data
Type EFHP

 Illustration 10: EVOLASTIC® type EFHP
(size 12 to 280)

 Illustration 11: EVOLASTIC® type EFHP
(size 360)

 Illustration 12: EVOLASTIC® type EFHP
(size 560)

Table 7: Dimensions - type EFHP

| Size | Flange connection acc. to SAE - J620 / diameter ¹⁾ | Dimensions ¹⁾ in mm | | | | | | | | | | | | | Cap screws DIN EN ISO 4762 | |
|------|---------------------------------------------------------------|--------------------------------|-----|-----|-----|----|----|-----|-----|-----|----|----|----|-----|----------------------------|--|
| | | D | DH | DN | B1 | B2 | E | L | L1 | L4 | L5 | L7 | SW | D5 | M1 | |
| 12 | 6.5" | 38 | 122 | 60 | 32 | 28 | 4 | 56 | 42 | 52 | 4 | 6 | 8 | 180 | M10 | |
| | 7.5" | | | | | | | | | | | | | 190 | | |
| 24 | 6.5" | 46 | 150 | 70 | 42 | 36 | 6 | 68 | 50 | 62 | 6 | 6 | 10 | 180 | M12 | |
| | 7.5" | | | | | | | | | | | | | 190 | | |
| 32 | 6.5" | 46 | 150 | 70 | 42 | 36 | 6 | 68 | 50 | 62 | 6 | 6 | 10 | 180 | M12 | |
| | 7.5" | | | | | | | | | | | | | 190 | | |
| 48 | 7.5" | 55 | 170 | 85 | 46 | 40 | 6 | 75 | 55 | 67 | 8 | 6 | 12 | 190 | M14 | |
| | 8" | | | | | | | | | | | | | 200 | | |
| | 10" | | | | | | | | | 71 | 4 | 10 | | 260 | | |
| | | | | | | | | | | | | | | | | |
| 60 | 10" | 65 | 200 | 100 | 58 | 50 | 8 | 90 | 66 | 84 | 6 | 10 | 14 | 270 | M16 | |
| | 11.5" | | | | | | | | | | | | | 310 | | |
| 86 | 10" | 65 | 200 | 100 | 58 | 50 | 8 | 90 | 66 | 84 | 6 | 10 | 14 | 270 | M16 | |
| | 11.5" | | | | | | | | | | | | | 360 | | |
| 125 | 10" | 85 | 260 | 125 | 70 | 63 | 7 | 107 | 80 | 98 | 9 | 10 | 17 | 270 | M20 | |
| | 11.5" | | | | | | | | | | | | | 310 | | |
| 200 | 10" | 85 | 260 | 125 | 70 | 63 | 7 | 107 | 80 | 98 | 9 | 10 | 17 | 270 | M20 | |
| | 11.5" | | | | | | | | | | | | | 310 | | |
| | 14" | | | | | | | | | | | | | 405 | | |
| 280 | 11.5" | 105 | 300 | 145 | 80 | 72 | 8 | 121 | 94 | 112 | 9 | 10 | 17 | 310 | M20 | |
| | 14" | | | | | | | | | | | | | 405 | | |
| 360 | 14" | 115 | 340 | 160 | 85 | 78 | 7 | 127 | 100 | 118 | 9 | 10 | 17 | 405 | M20 | |
| 560 | 14" | 120 | 363 | 170 | 105 | 95 | 10 | 160 | 125 | 145 | 15 | 10 | 19 | 405 | M24 | |

1) For dimensions of flange connection see table 9.


In case if a dimensional drawing was prepared for the coupling, the dimensions specified have to be primarily observed.

**KTR-Group**

EVOLASTIC®
Operating/Assembly instructions
Type EP, EHP, E2HP and EFHP

KTR-N 48612 EN
 Sheet: 7 of 24
 Edition: 2

1 Technical data**1.2 General dimensions and torques****Table 8: Technical data - type EFHP**

| Size | Flange connection acc. to SAE - J620 / diameter ¹⁾ | Total weight with maximum bore of coupling in kg | Mass moment of inertia with maximum bore of coupling in kgm ² | |
|------|---------------------------------------------------------------|--------------------------------------------------|--------------------------------------------------------------------------|----------------|
| | | | J _A | J _L |
| 12 | 6.5" | 3.33 | 0.014 | 0.001 |
| | 7.5" | 3.84 | 0.020 | 0.001 |
| 24 | 6.5" | 4.30 | 0.016 | 0.002 |
| | 7.5" | 4.86 | 0.249 | 0.002 |
| 32 | 6.5" | 4.57 | 0.017 | 0.003 |
| | 7.5" | 5.13 | 0.024 | 0.003 |
| 48 | 7.5" | 6.20 | 0.027 | 0.005 |
| | 8" | 6.80 | 0.035 | 0.005 |
| | 10" | 10.09 | 0.091 | 0.005 |
| 60 | 10" | 12.30 | 0.105 | 0.011 |
| | 11.5" | 14.73 | 0.166 | 0.011 |
| 86 | 10" | 12.82 | 0.107 | 0.012 |
| | 11.5" | 15.24 | 0.168 | 0.012 |
| 125 | 10" | 17.10 | 0.134 | 0.034 |
| | 11.5" | 19.95 | 0.204 | 0.034 |
| 200 | 10" | 18.20 | 0.141 | 0.039 |
| | 11.5" | 21.06 | 0.212 | 0.039 |
| | 14" | 30.57 | 0.578 | 0.039 |
| 280 | 11.5" | 24.35 | 0.239 | 0.072 |
| | 14" | 33.87 | 0.606 | 0.072 |
| 360 | 14" | 38.25 | 0.642 | 0.130 |
| 560 | 14" | 51.35 | 0.847 | 0.203 |

1) For dimensions of flange connection see table 9.

Table 9: Flange dimensions according to SAE J 620

| Nominal size | Flange dimensions in mm | | | | | |
|--------------|-------------------------|---------|---------|---------|---------|---------|
| | 6.5" | 7.5" | 8" | 10" | 11.5" | 14" |
| Dimension DA | 215.9 | 241.3 | 263.52 | 314.32 | 352.42 | 466.62 |
| Dimension D4 | 200.02 | 222.25 | 244.47 | 295.27 | 333.37 | 438.15 |
| Z x Pitch | 6 x 60° | 8 x 45° | 6 x 60° | 8 x 45° | 8 x 45° | 8 x 45° |
| Dimension DL | 9 | 9 | 11 | 11 | 11 | 14 |


Table 10: Torques

| Size | Type of elastomers | Torque in Nm | | | | Perm. operating speed in rpm | |
|------|--------------------|-----------------|--------------------|---------------------|-----------------|------------------------------|------------------|
| | | T _{KN} | T _{K max} | T _{K max1} | T _{KW} | n | n _{max} |
| 12 | SN | 100 | 200 | 300 | 40 | 4500 | 5000 |
| | MN | 120 | 240 | 360 | 48 | 5400 | 6000 |
| 24 | SN | 200 | 400 | 600 | 80 | 3780 | 4200 |
| | MN | 240 | 480 | 720 | 96 | 4500 | 5000 |
| 32 | SN | 280 | 560 | 840 | 112 | 3800 | 4200 |
| | MN | 320 | 640 | 960 | 128 | 4500 | 5000 |
| 48 | SN | 420 | 840 | 1260 | 168 | 3780 | 4200 |
| | MN | 480 | 960 | 1440 | 192 | 4500 | 5000 |
| 60 | SN | 500 | 1000 | 1500 | 200 | 3240 | 3600 |
| | MN | 600 | 1200 | 1800 | 240 | 3600 | 4000 |
| 86 | SN | 760 | 1520 | 2280 | 304 | 3600 | 4000 |
| | MN | 860 | 1720 | 2580 | 344 | 4050 | 4500 |
| 125 | SN | 1100 | 2200 | 3300 | 440 | 2880 | 3200 |
| | MN | 1250 | 2500 | 3750 | 500 | 3240 | 3600 |
| 200 | SN | 1700 | 3400 | 5100 | 680 | 3060 | 3400 |
| | MN | 2000 | 4000 | 5250 | 800 | 3240 | 3600 |
| 280 | WN | 2400 | 4800 | 6100 | 960 | 2700 | 3000 |
| | MN | 2800 | 5600 | 6100 | 1120 | 3060 | 3400 |
| 360 | WN | 3200 | 5400 | 9600 | 1280 | 2700 | 3000 |
| | SN | 3400 | 6800 | 10200 | 1360 | 3060 | 3400 |
| | MN | 3600 | 7200 | 10800 | 1440 | 3060 | 3400 |
| 560 | WN | 5000 | 10000 | 14000 | 2000 | 2250 | 2500 |
| | SN | 5200 | 10400 | 14000 | 2080 | 2520 | 2800 |
| | MN | 5600 | 11200 | 14000 | 2240 | 2700 | 3000 |

Please observe protection
note ISO 16016.

Drawn: 2022-11-29 Pz/Mai
 Verified: 2022-12-01 Pz

Replacing: KTR-N dated 2021-02-22
 Replaced by:

| | | |
|---------------------------------------------------------------------------------------------------|---------------------------------------------------------------------------------------------------|---------------------------------------------------------------------|
|  KTR-Group | EVOLASTIC® Operating/Assembly instructions Type EP, EHP, E2HP and EFHP | KTR-N 48612 EN Sheet: 8 of 24 Edition: 2 |
|---------------------------------------------------------------------------------------------------|---------------------------------------------------------------------------------------------------|---------------------------------------------------------------------|

1 Technical data

1.2 General dimensions and torques

Maximum torque of coupling $T_{K\max}$ = rated torque of coupling $T_{KN} \times 2.0$.

The maximum torque $T_{K\max}$ signifies short-term torque peaks (e.g. when passing through the resonance). $T_{K\max}$ may arise at the maximum 50,000 times as vibratory torque or 100,000 times as pulsating torque.

Triple torque of coupling $T_{K\max1}$ = rated torque of coupling $T_{KN} \times \sim 3.0$.

The triple rated torque $T_{K\max1}$ is the torque that may arise only rarely, but only 1,000 times at the maximum. Exceeding the triple torque of $T_{K\max1}$ may cause impairment resp. damage of the coupling components.

2 Advice

2.1 General advice

Read carefully through these operating/assembly instructions before you start up the coupling.

Pay special attention to the safety instructions!

The operating/assembly instructions are part of your product. Please store them carefully and close to the coupling. The copyright for these operating/assembly instructions remains with KTR.

2.2 Safety and advice symbols



Warning of personal injury

This symbol indicates notes which may contribute to preventing bodily injuries or serious bodily injuries that may result in death.



Warning of product damages

This symbol indicates notes which may contribute to preventing material or machine damage.



General advice

This symbol indicates notes which may contribute to preventing adverse results or conditions.



Warning of hot surfaces

This symbol indicates notes which may contribute to preventing burns with hot surfaces resulting in light to serious bodily injuries.


2.3 General hazard warnings



With assembly, operation and maintenance of the coupling it has to be made sure that the entire drive train is secured against accidental switch-on. You may be seriously hurt by rotating parts. Make absolutely sure to read through and observe the following safety indications.

- All operations on and with the coupling have to be performed taking into account "safety first".
- Make sure to switch off the power pack before you perform your work on the coupling.
- Secure the power pack against accidental switch-on, e. g. by providing warning signs at the place of switch-on or removing the fuse for current supply.
- Do not reach into the operating area of the coupling as long as it is in operation.
- Secure the coupling against accidental contact. Provide for the necessary protection devices and covers.

| | | |
|-------------------------------------------|-----------------------------------------------------|---------------------------------------------------|
| Please observe protection note ISO 16016. | Drawn: 2022-11-29 Pz/Mai Verified: 2022-12-01 Pz | Replacing: KTR-N dated 2021-02-22 Replaced by: |
|-------------------------------------------|-----------------------------------------------------|---------------------------------------------------|

| | | |
|---------------------------------------------------------------------------------------------------|---------------------------------------------------------------------------------------------------|------------------------------------------------|
|  KTR-Group | EVOLASTIC® Operating/Assembly instructions Type EP, EHP, E2HP and EFHP | KTR-N 48612 EN Sheet: 9 of 24 Edition: 2 |
|---------------------------------------------------------------------------------------------------|---------------------------------------------------------------------------------------------------|------------------------------------------------|

2 Advice

2.4 Proper use

You may only assemble, operate and maintain the coupling if you

- have carefully read through the operating/assembly instructions and understood them
- are technically qualified and specifically trained (e. g. safety, environment, logistics)
- are authorized by your company

The coupling may only be used in accordance with the technical data (see chapter 1). Unauthorized modifications on the coupling design are not admissible. We will not assume liability for any damage that may arise. In the interest of further development we reserve the right for technical modifications.

The **EVOLASTIC®** described in here corresponds to the state of the art at the time of printing of these operating/assembly instructions.

2.5 Coupling selection



For a permanent and failure-free operation of the coupling it must be selected according to the selection instructions (according to DIN 740 part 2) for the particular application (see catalogue drive technology "EVOLASTIC®").

If the operating conditions (performance, speed, modifications on engine and machine) change, the coupling selection must be reviewed.

Make sure that the technical data regarding torque refer to the elastomer part only. The transmittable torque of the shaft-hub-connection must be reviewed by the customer and is subject to his responsibility.

For drives subjected to torsional vibrations (drives with cyclic stress due to torsional vibrations) it is necessary to perform a torsional vibration calculation to ensure a reliable selection. Typical drives subject to torsional vibrations are e. g. drives with diesel engines, piston pumps, piston compressors etc. If requested, KTR will perform the coupling selection and the torsional vibration calculation.

2.6 Reference to EC Machinery Directive 2006/42/EC

The couplings supplied by KTR should be considered as components, not machines or partly completed machines according to EC Machinery Directive 2006/42/EC. Consequently KTR does not have to issue a declaration of incorporation. For details about safe assembly, start-up and safe operation refer to the present operating/assembly instructions considering the warnings.

| | | |
|-------------------------------------------|-----------------------------------------------------|---------------------------------------------------|
| Please observe protection note ISO 16016. | Drawn: 2022-11-29 Pz/Mai Verified: 2022-12-01 Pz | Replacing: KTR-N dated 2021-02-22 Replaced by: |
|-------------------------------------------|-----------------------------------------------------|---------------------------------------------------|



3 Storage, transport and packaging

3.1 Storage

The coupling hubs are supplied in preserved condition and can be stored in a dry and roofed place for 6 - 9 months.

With favourable storage conditions the properties of the elastomer part remain unchanged for up to 5 years.



The storage rooms must not include any ozone-generating devices like e. g. fluorescent light sources, mercury-vapour lamps or electrical high-voltage appliances.

Humid storage rooms are not suitable.

Make sure that condensation is not generated. The best relative air humidity is less than 65 %.



Please bear in mind that the elastomer part may be stored horizontally only.

3.2 Transport and packaging



In order to avoid any injuries and any kind of damage always make use of proper transport and lifting equipment.

The couplings are packed differently each depending on size, number and kind of transport. Unless otherwise contractually agreed, packaging will follow the in-house packaging specifications of KTR.

4 Assembly

The coupling is supplied in the following subassemblies and single parts. Before assembly the coupling has to be inspected for completeness.

4.1 Types of hubs

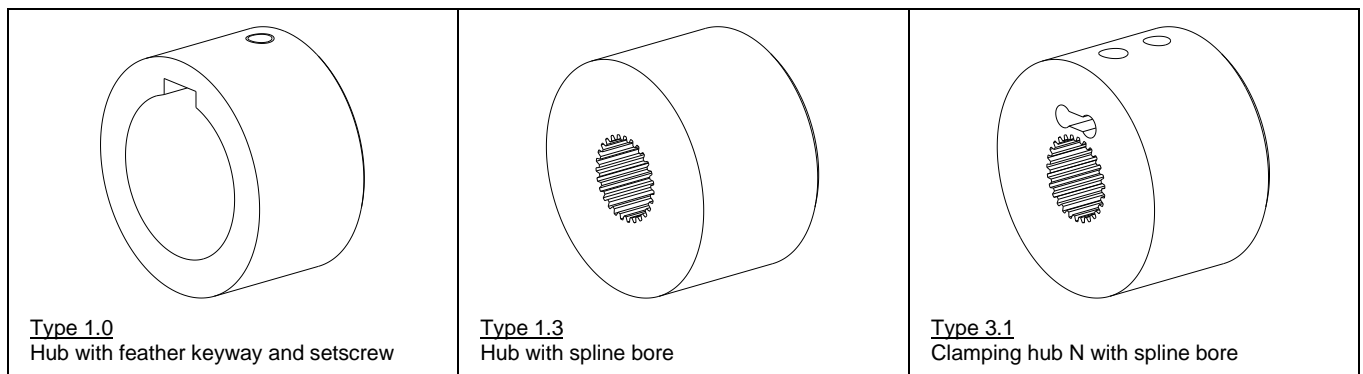


Illustration 13: Types of hubs



4 Assembly

4.2 Components of the couplings

Components of type EP

| Component | Quantity | Description |
|-----------------|--------------|----------------------------------|
| 1 | 1 | Elastomer part EP |
| 5 | see table 11 | Locking pin |
| 5.1 | see table 11 | Plug-in sleeve |
| 5.2 | see table 11 | Cap screw DIN EN ISO 4762 - 12.9 |
| 6 | see table 11 | Cap screw DIN EN ISO 4762 - 12.9 |
| 7 | see table 11 | Ratchet washer |
| 8 ¹⁾ | see table 11 | Clamping sleeve DIN 7346 |

1) Component 8 is omitted with size 12

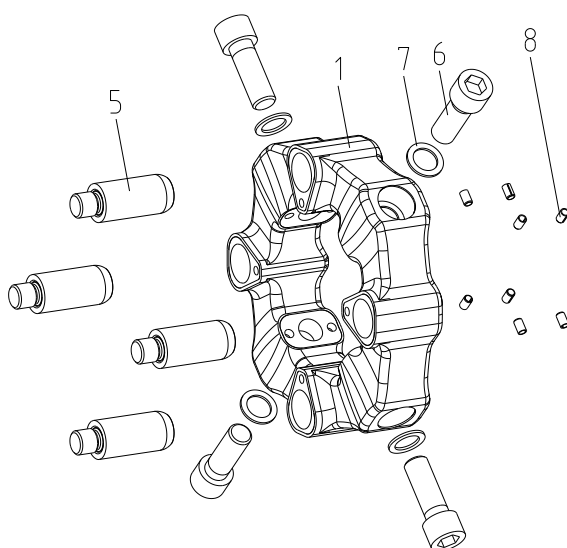


Illustration 14: EVOLASTIC® type EP
(size 12 to 280)

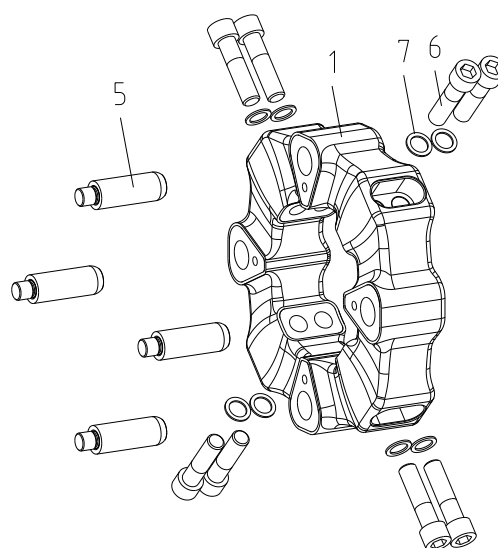


Illustration 15: EVOLASTIC® type EP
(size 360)

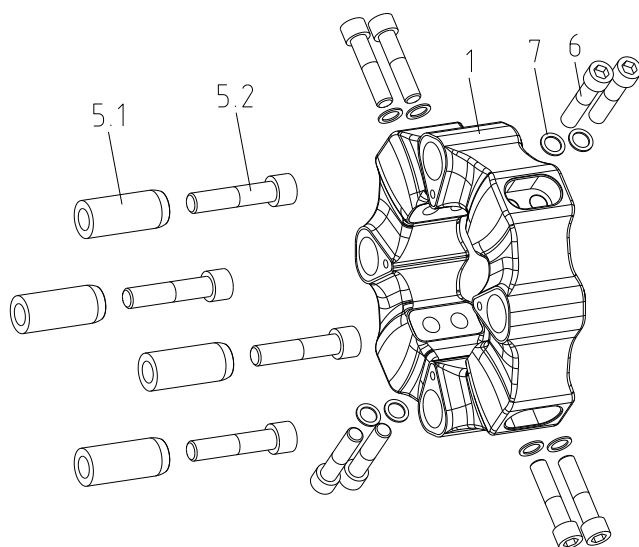


Illustration 16: EVOLASTIC® type EP
(size 560)



4 Assembly

4.2 Components of the couplings

Components of type EHP

| Component | Quantity | Description |
|-----------------|--------------|----------------------------------|
| 1 | 1 | Elastomer part EP |
| 2 | 1 | Hub radial |
| 5 | see table 11 | Locking pin |
| 5.1 | see table 11 | Plug-in sleeve |
| 5.2 | see table 11 | Cap screw DIN EN ISO 4762 - 12.9 |
| 6 | see table 11 | Cap screw DIN EN ISO 4762 - 12.9 |
| 7 | see table 11 | Ratchet washer |
| 8 ¹⁾ | see table 11 | Clamping sleeve DIN 7346 |

1) Component 8 is omitted with size 12

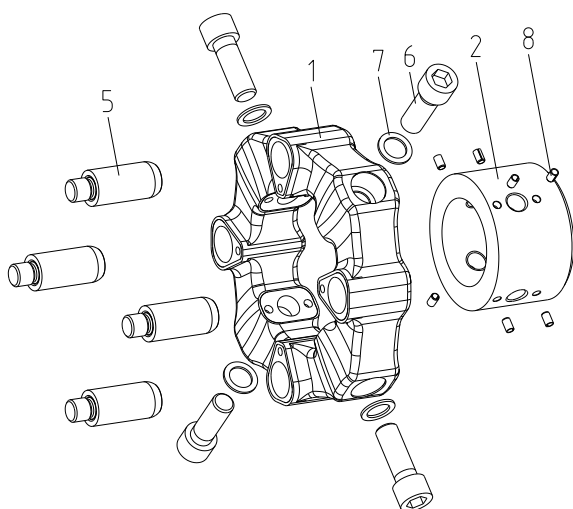


Illustration 17: EVOLASTIC® type EHP
(size 12 to 280)

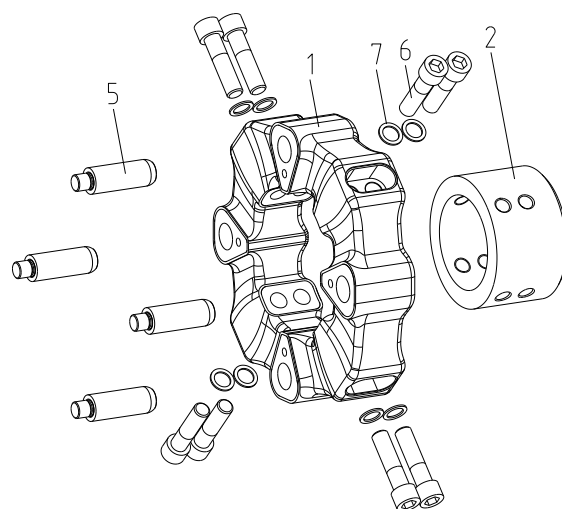


Illustration 18: EVOLASTIC® type EHP
(size 360)

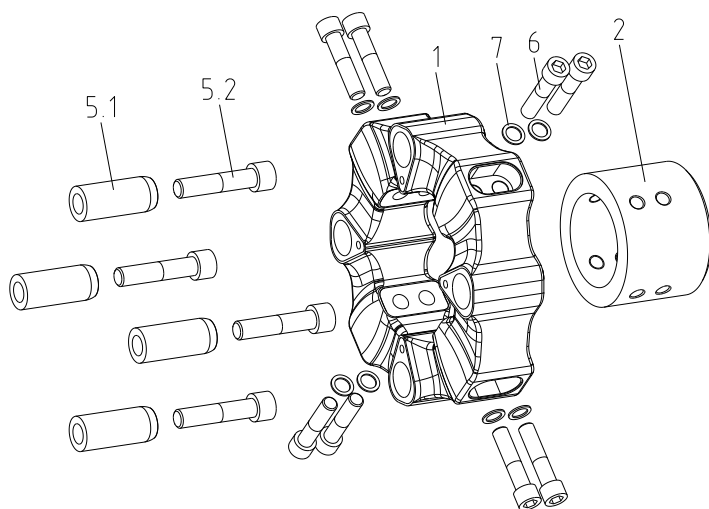


Illustration 19: EVOLASTIC® type EHP
(size 560)



4 Assembly

4.2 Components of the couplings

Components of type E2HP

| Component | Quantity | Description |
|-----------------|--------------|----------------------------------|
| 1 | 1 | Elastomer part EP |
| 2 | 1 | Hub radial |
| 3 | 1 | Hub axial |
| 5 | see table 11 | Locking pin |
| 5.1 | see table 11 | Plug-in sleeve |
| 5.2 | see table 11 | Cap screw DIN EN ISO 4762 - 12.9 |
| 6 | see table 11 | Cap screw DIN EN ISO 4762 - 12.9 |
| 7 | see table 11 | Ratchet washer |
| 8 ¹⁾ | see table 11 | Clamping sleeve DIN 7346 |

1) Component 8 is omitted with size 12

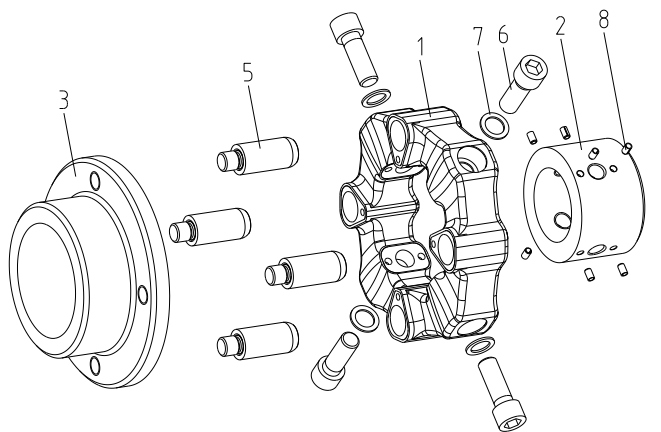


Illustration 20: EVOLASTIC® type E2HP
(size 12 to 280)

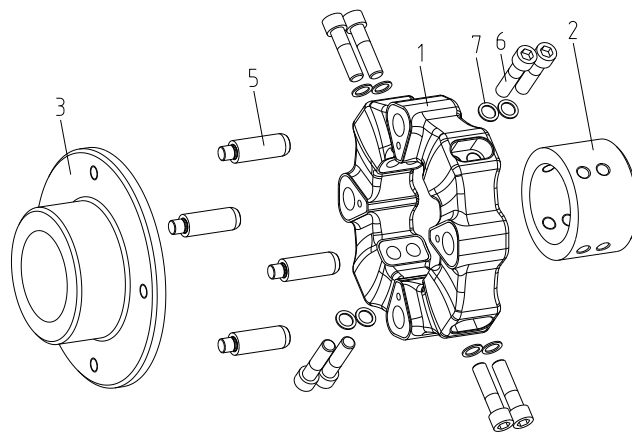


Illustration 21: EVOLASTIC® type E2HP
(size 360)

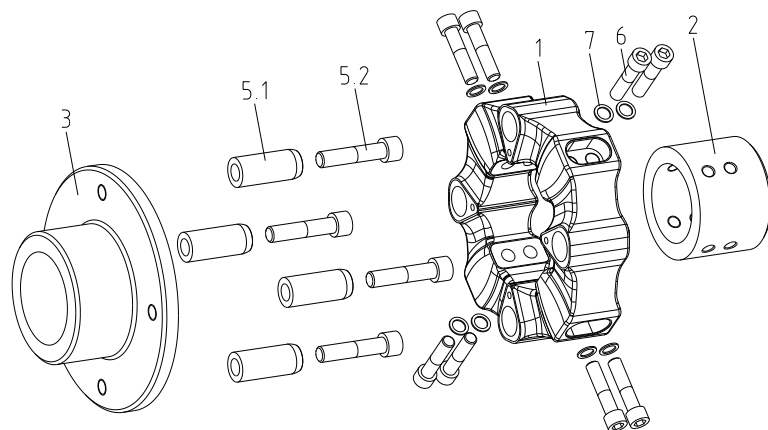


Illustration 22: EVOLASTIC® type E2HP
(size 560)



4 Assembly

4.2 Components of the couplings

Components of type EFHP

| Component | Quantity | Description |
|-----------------|--------------|----------------------------------|
| 1 | 1 | Elastomer part EP |
| 2 | 1 | Hub radial |
| 4 | 1 | Flange |
| 5 | see table 11 | Locking pin |
| 5.1 | see table 11 | Plug-in sleeve |
| 5.2 | see table 11 | Cap screw DIN EN ISO 4762 - 12.9 |
| 6 | see table 11 | Cap screw DIN EN ISO 4762 - 12.9 |
| 7 | see table 11 | Ratchet washer |
| 8 ¹⁾ | see table 11 | Clamping sleeve DIN 7346 |

1) Component 8 is omitted with size 12

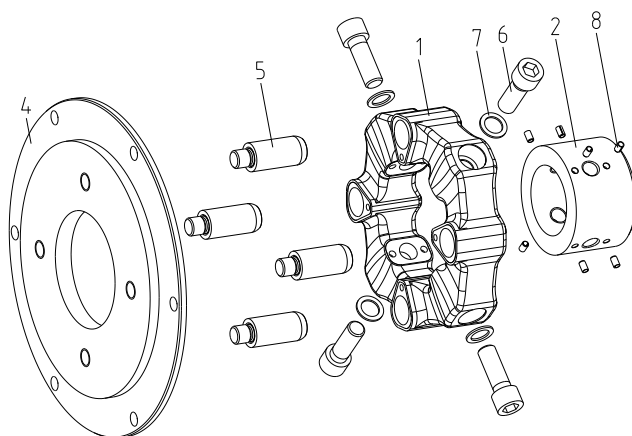


Illustration 23: EVOLASTIC® type EFHP
(size 12 to 280)

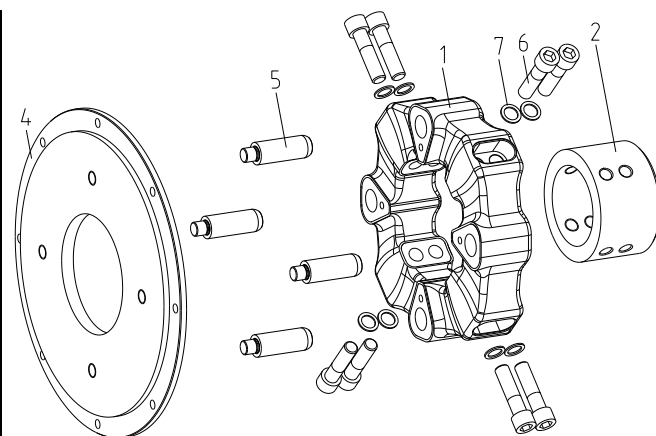


Illustration 24: EVOLASTIC® type EFHP
(size 360)

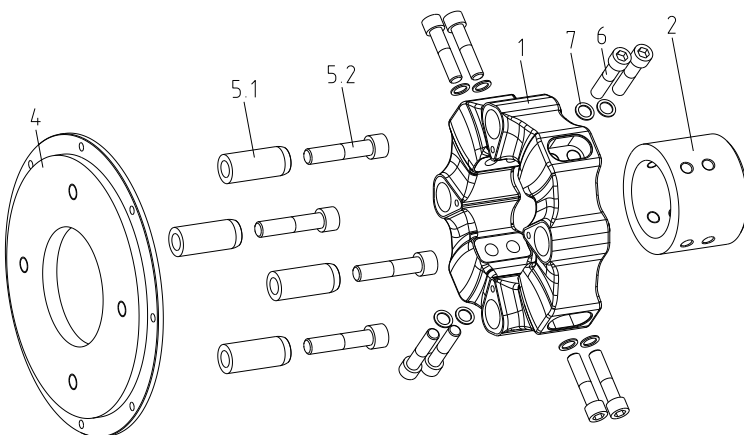


Illustration 25: EVOLASTIC® type EFHP
(size 560)

Table 11: Number of cap screws, ratchet washers and clamping sleeves

| Size | 12 | 24 | 32 | 48 | 60 | 86 | 125 | 200 | 280 | 360 | 560 |
|------------------------------------------|----|----|----|----|----|----|-----|-----|-----|-----|-----|
| Number of locking pins (component 5) | 3 | 3 | 4 | 4 | 3 | 4 | 3 | 4 | 4 | 8 | - |
| Number of plug-in sleeve (component 5.1) | - | - | - | - | - | - | - | - | - | - | 4 |
| Number of cap screws (component 5.2) | - | - | - | - | - | - | - | - | - | - | 4 |
| Number of cap screws (component 6) | 3 | 3 | 4 | 4 | 3 | 4 | 3 | 4 | 4 | 8 | 8 |
| Number of ratchet washers (component 7) | 3 | 3 | 4 | 4 | 3 | 4 | 3 | 4 | 4 | 8 | 8 |
| Number of clamping sleeves (component 8) | - | 6 | 8 | 8 | 6 | 8 | 6 | 8 | 8 | - | - |



4 Assembly

4.3 Advice for finish bore



The maximum permissible bore diameters D (see chapter 1 - technical data) must not be exceeded. If these figures are disregarded, the coupling may tear. Rotating particles may cause danger to life.

- Hub bores machined by the customer have to observe concentricity resp. axial runout (see illustration 26).
- Make absolutely sure to observe the figures for $\varnothing D_{\max.}$.
- Carefully align the hubs when the finish bores are drilled.
- If possible, provide for a setscrew according to DIN EN ISO 4029 with a cup point or an end plate to fasten the hubs axially.

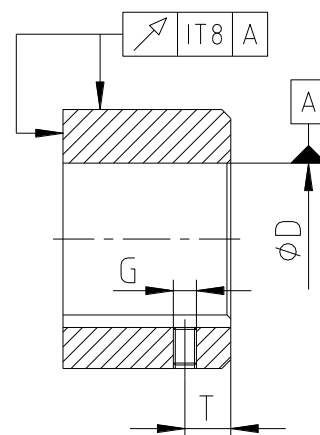


Illustration 26:
Concentricity and axial runout



The customer bears the sole responsibility for all machining processes performed subsequently on unbored or pilot bored as well as finish machined coupling components and spare parts. KTR does not assume any warranty claims resulting from insufficient remachining.

Table 12: Setscrew DIN EN ISO 4029

| Size | | 12 | 24 | 32 | 48 | 60 | 86 | 125 | 200 | 280 | 360 | 560 |
|------------------------------|--------------------------|----|----|----|----|-----|-----|-----|-----|-----|-----|-----|
| Dimension G | | M8 | M8 | M8 | M8 | M10 | M10 | M10 | M10 | M12 | M16 | M16 |
| Dimension T | Hub radial (component 2) | 9 | 9 | 9 | 10 | 10 | 10 | 11 | 11 | 14 | 14 | 20 |
| | Hub axial (component 3) | 15 | 15 | 15 | 20 | 20 | 20 | 20 | 20 | 30 | 30 | 40 |
| Tightening torque T_A [Nm] | | 10 | 10 | 10 | 10 | 17 | 17 | 17 | 17 | 40 | 80 | 80 |

4.4 General advice for assembly



The EVOLASTIC® coupling may only be assembled in the order described in here.



In case if a dimensional drawing was prepared for the coupling, the dimensions specified have to be primarily observed.



We recommend to inspect bores, shaft, keyway and feather key for dimensional accuracy before assembly.



Heating the hubs lightly (approx. 80 °C) allows for easier mounting on the shaft.



Touching the heated hubs causes burns.
Please wear safety gloves.



We recommend to secure all screw connections against working loose additionally to securing screws by the ratchet washer, e. g. applying Loctite screw adhesive (average strength), while the elastomer parts must not come into contact with any type of adhesive.

**4 Assembly****4.5 Assembly of clamping sleeves (component 8)**

- **Only valid for size 24 to 280:**

Drive the clamping sleeves (component 8) in the hub radial (component 2) (see illustration 27).

- **Only valid for type EP:**

Drive the clamping sleeves (component 8) in the attachment provided by the customer or the elastomer part (component 1) (see illustration 28).



For the assembly of the clamping sleeves observe dimensions A1, DB and LB2 according to table 1.

- **Only valid for type EP as spare part versus other manufacturers:**

The clamping sleeves (component 8) and the bores for the relevant clamping sleeves can be omitted.



Please note that the hub radial must have some kind of knurling respectively another provision against twisting of the elastomer part on the hub radial.
Any kind of twisting must be eliminated with assembly of the elastomer part (component 1).

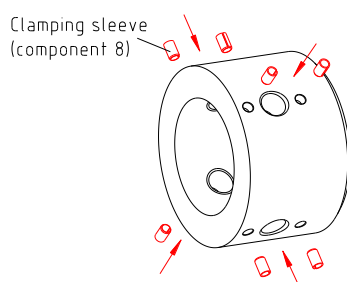


Illustration 27: Assembly of clamping sleeves (component 8)

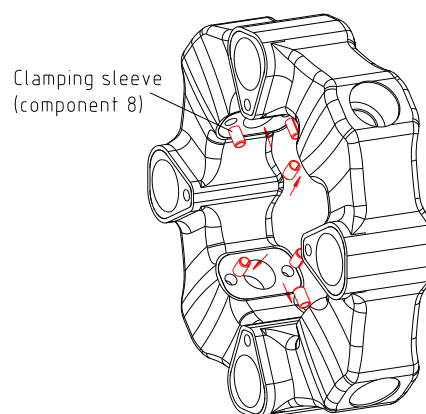


Illustration 28: Type EP - Assembly of clamping sleeves (component 8)

4.6 Assembly of the hubs (components 2 and 3)

- Mount the hubs (component 2 and 3) on the shaft of driving and driven side.
- Fasten the hubs by tightening the setscrew DIN EN ISO 4029 with a cup point (tightening torque T_A see table 12) or an end plate.



4 Assembly

4.7 Assembly of the flange (component 4)

- Push the flange (component 2) into the centering of the flywheel.
- Align the through holes of the connection flange to the threads of the flywheel.
- Hand-tighten the components via suitable screws (not part of the scope of delivery) first.
- Tighten the screws at the tightening torques T_A specified in table 14 by means of a suitable torque key.



We recommend to secure all screw connections against working loose additionally, e. g. applying Loctite screw adhesive (average strength), while the elastomer parts must not come into contact with any type of adhesive.

Table 14: Screw tightening torques for screwing the connection flange to the engine flywheel

| Size of flywheel acc. to SAE - J620 ¹⁾ | 6.5" | 7.5" | 8" | 10" | 11.5" | 14" |
|---------------------------------------------------|-----------|-----------|----------|----------|----------|----------|
| Screw size | M8 | M8 | M10 | M10 | M10 | M12 |
| Tightening torque [Nm] | 25 | 25 | 49 | 49 | 49 | 120 |
| Minimum screw strength | 8.8 | 8.8 | 8.8 | 8.8 | 8.8 | 10.9 |
| Inch screw | 5/16 - 18 | 5/16 - 18 | 3/8 - 16 | 3/8 - 16 | 3/8 - 16 | 1/2 - 13 |
| Tightening torque [Nm] | 24 | 24 | 42 | 42 | 42 | 150 |
| Minimum screw strength | 5 | 5 | 5 | 5 | 5 | 8 |

1) For dimensions of flange connection see table 9.

4.8 Assembly of elastomer part (component 1)



We recommend to secure all screw connections against working loose additionally, e. g. applying Loctite screw adhesive (average strength), while the elastomer parts must not come into contact with any type of adhesive.

- Screw the locking pins (component 5) resp. plug-in sleeves (component 5.1) with the cap screws (component 5.2) in the hub axial (component 3) or to the flange (component 4) respectively the attachment provided by the customer (see illustration 29 and 30). Secure the locking pin against working loose by means of an adhesive (e. g. Loctite average strength).
- Tighten the locking pins (component 5) resp. the cap screws (component 6) to the tightening torques T_{A1} specified in table 15 by a suitable torque key.

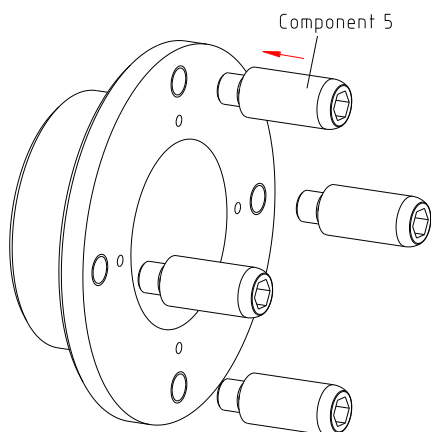


Illustration 29: Assembly of locking pins
 (Example: type E2HP - size 12 to 360)

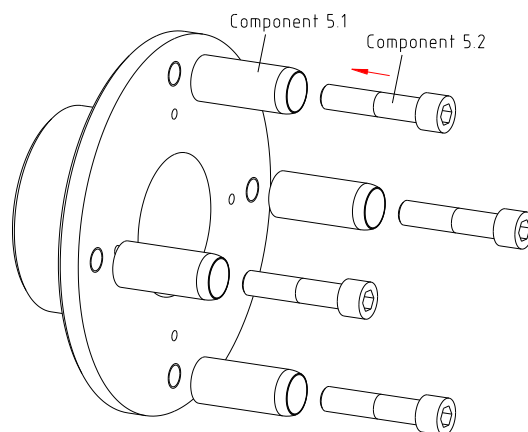


Illustration 30: Assembly of plug-in sleeve
 (Example: type E2HP - size 560)



4 Assembly

4.8 Assembly of elastomer part (component 1)

- Push the elastomer part (component 1) on the hub radial (component 2) (see illustration 31).
- Hand-tighten the elastomer part and the hub via the cap screws (component 6) and the ratchet washers (component 7) first.



Make sure that the ratchet washer (component 7) is inserted with the convex side to the screw head of the cap screw (component 6).

- Tighten the cap screws (component 6) to the tightening torques T_{A2} specified in table 15 by a suitable torque key.
- Preferably shift the power pack of the driven side with the elastomer part (component 1) mounted in axial direction until the mounting dimension E is achieved. For that purpose align the bores of the elastomer part to the locking pins (component 5) resp. plug-in sleeves (component 5.1) (see illustration 32). Preferably push the power packs together so that the elastomer part fits to the hub axial (component 3) or the flange (component 4) respectively the attachment provided by the customer.



The clamping sleeves (component 8) prevent twisting of the elastomer part with mounting.

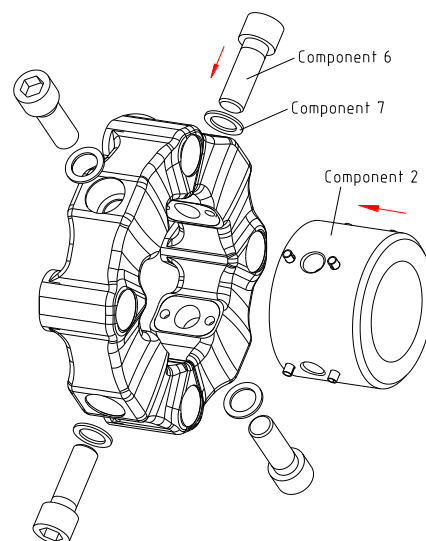


Illustration 31: Assembly of the elastomer part to the hub radial
(Example: type E2HP)

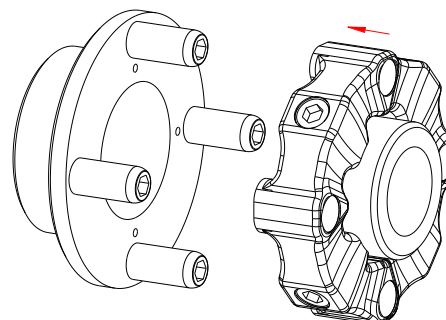


Illustration 32: Assembly of the coupling

Table 15: Cap screws DIN EN ISO 4762 - 12.9 (component 5, 5.2 and 7)

| Size | 12 | 24 | 32 | 48 | 60 | 86 | 125 | 200 | 280 | 360 | 560 |
|---------------------------------|-----|-----|-----|-----|-----|-----|-----|-----|-----|-----|------|
| Dimension M1 | M10 | M12 | M12 | M14 | M16 | M16 | M20 | M20 | M20 | M20 | M24 |
| Tightening torque T_{A1} [Nm] | 71 | 123 | 123 | 195 | 302 | 302 | 592 | 592 | 592 | 592 | 1017 |
| Dimension M2 | M10 | M12 | M12 | M14 | M16 | M16 | M20 | M20 | M20 | M20 | M20 |
| Tightening torque T_{A2} [Nm] | 71 | 123 | 123 | 195 | 302 | 302 | 592 | 592 | 592 | 592 | 592 |



4 Assembly

4.9 Displacements - alignment of the couplings

The **EVOLASTIC®** flange couplings compensate for position deviations of the machine components to be connected up to the data specified in table 16.

With alignment, the radial and angular displacement should be kept as small as possible, because the service life is increased in this way provided that the operating conditions are maintained besides that.

The **EVOLASTIC®** flange coupling has to be aligned from the coupling hub on the shaft side to one of the machined surfaces of the flywheel or machine.

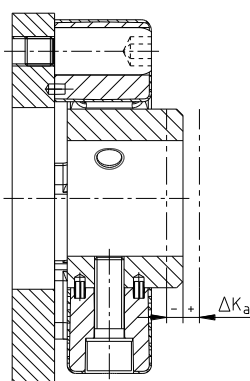


In order to ensure a long service life of the coupling, the shaft ends have to be accurately aligned. Please absolutely observe the displacement figures specified (see table 16). If the figures are exceeded, the coupling will be damaged.

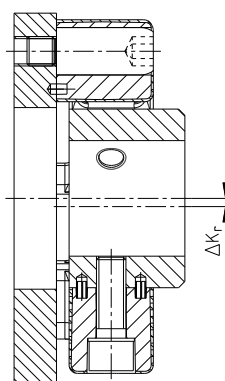
The more accurate the alignment of the coupling, the longer is its service life.

Please note:

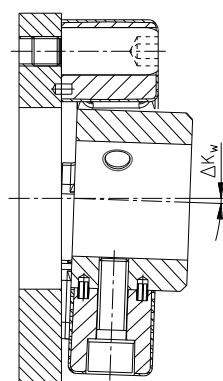
- The displacement figures specified in table 16 are maximum figures which must not arise in parallel. If radial and angular displacements arise simultaneously, the permissible displacement figures may only be used proportionally (see illustration 34).
- The radial and angular displacement figures specified refer to a reference speed of 1500 rpm. The diagramme of displacement alignment (see illustration 35) provides for a speed-dependent increase or reduction of displacement figures by factor f_{rpm} . The displacement figures between the speeds specified have to be interpolated accordingly.
- The figures of maximum displacements refer to the mounting process; in addition they are permissible for a short time respectively rarely at standstill or with start-up operation as well as with exceptional loading conditions.
- The displacement figures are general standard figures that apply up to an ambient temperature of +80 °C, ensuring a sufficient service life of the **EVOLASTIC®** coupling.
- Inspect with a dial gauge, ruler or feeler gauge whether the permissible displacement figures specified in table 16 can be observed.



Axial displacement



Radial displacement



Angular displacement

Illustration 33: Displacements



4 Assembly

4.9 Displacements - alignment of the couplings

Examples of the displacement combinations specified in illustration 34:

Example 1:

$\Delta K_r = 30 \%$

$\Delta K_w = 70 \%$

Example 2:

$\Delta K_r = 60 \%$

$\Delta K_w = 40 \%$

$$\Delta K_{\text{total}} = \Delta K_r + \Delta K_w \leq 100 \%$$

Illustration 34:
Combinations of displacement

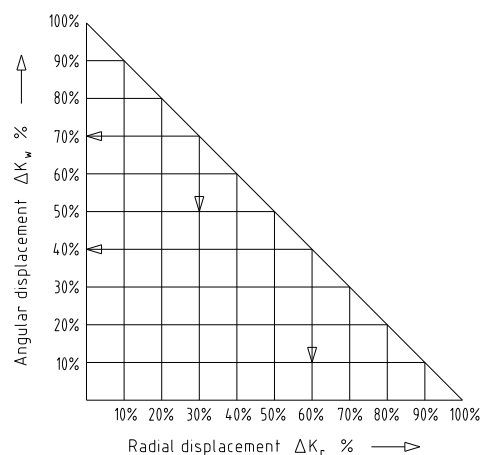


Table 16: Displacement figures

| Size | | 12 | 24 | 32 | 48 | 60 | 86 | 125 | 200 | 280 | 360 | 560 |
|----------------------------------------------------------|--------------------|------|------|------|------|------|------|------|------|------|------|------|
| Perm. axial displacement ΔK_a [mm] ¹⁾ | | ±2.5 | ±3.0 | ±3.0 | ±2.5 | ±3.0 | ±3.0 | ±3.5 | ±3.0 | ±3.5 | ±4.0 | ±4.0 |
| Perm. radial displacement ΔK_r [mm] | 1500 rpm | 2.0 | 2.0 | 2.0 | 2.0 | 2.5 | 2.0 | 2.5 | 2.5 | 2.5 | 3.0 | 3.0 |
| | max. ²⁾ | 3.6 | 3.6 | 3.6 | 3.6 | 4.5 | 3.6 | 4.5 | 4.5 | 4.5 | 5.4 | 5.4 |
| Perm. angular displacement ΔK_w [°] | 1500 rpm | 3.0 | 3.0 | 2.0 | 2.0 | 3.0 | 2.0 | 3.0 | 2.0 | 2.0 | 2.0 | 2.0 |
| | max. ²⁾ | 6.0 | 6.0 | 4.0 | 4.0 | 6.0 | 4.0 | 6.0 | 4.0 | 4.0 | 4.0 | 4.0 |

1) The axial displacement stated specifies the permissible displacement of the elastomer part. The elastomer part should fit to the hub axial (component 3) or the flange (component 4) respectively the attachment provided by the customer.

2) for short-term start-up operation

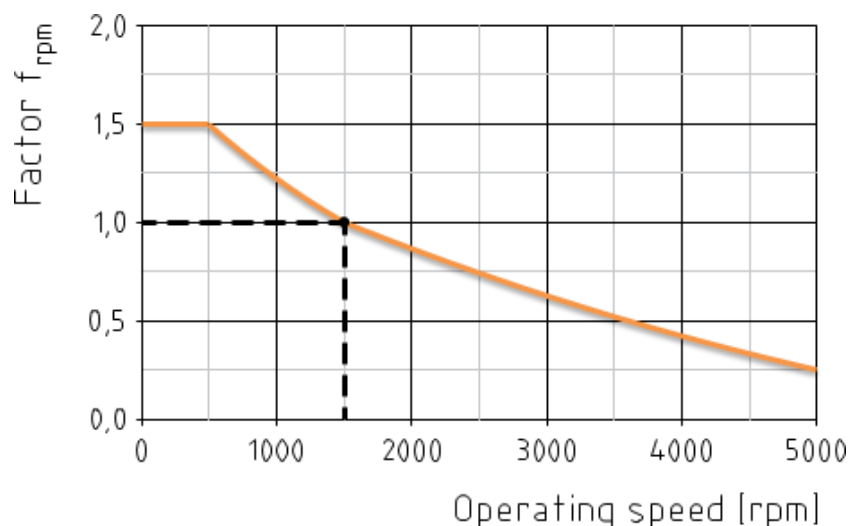



Illustration 35: Diagramme of displacement alignment

| | | |
|---------------------------------------------------------------------------------------------------|---------------------------------------------------------------------------------------------------|----------------------------------------------------------------------|
|  KTR-Group | EVOLASTIC® Operating/Assembly instructions Type EP, EHP, E2HP and EFHP | KTR-N 48612 EN Sheet: 21 of 24 Edition: 2 |
|---------------------------------------------------------------------------------------------------|---------------------------------------------------------------------------------------------------|----------------------------------------------------------------------|

5 Start-up

Before start-up of the coupling, inspect the alignment and the distance dimension E and adjust, if necessary, and also inspect all screw connections for the tightening torques specified.

Finally the coupling protection against accidental contact must be fitted. It is required in accordance with DIN EN ISO 12100 (Safety of Machinery) and directive 2014/34/EU and must protect against

- access with a little finger
- falling down of solid foreign objects.

The coupling protection is not part of KTR's scope of delivery and is the customer's responsibility. It must have sufficient distance to the rotating components to avoid contact safely. We recommend a minimum distance of 15 mm from the outside diameter DH of the coupling.

The cover may provide for openings intended for necessary heat dissipation. These openings have to comply with DIN EN ISO 13857.

During operation of the coupling, please pay attention to

- different operating noise
- vibrations occurring.



If you note any irregularities with the coupling during operation, the drive unit must be switched off immediately. The cause of the breakdown must be specified by means of the table „Breakdowns“ and, if possible, be eliminated according to the proposals. The potential breakdowns specified can be hints only. To find out the cause all operating factors and machine components must be considered.

6 Breakdowns, causes and elimination

The below-mentioned failures can lead to improper use of the **EVOLASTIC®** coupling. In addition to the specifications given in these operating/assembly instructions make sure to avoid such failures. The errors listed can only be clues to search for the failures. When searching for the failure the adjacent components must generally be considered.

General failures with improper use:

- Important data for the coupling selection are not forwarded.
- The calculation of the shaft-hub-connection is not considered.
- Coupling components with damage occurred during transport are assembled.
- If the heated hub is assembled, the permissible temperature is exceeded.
- The clearance of the components to be assembled is not coordinated with one another.
- Tightening torques are fallen below/exceeded.
- Components are mixed up by mistake/assembled incorrectly.
- No original **KTR** components (purchased parts) are used.
- Old/already worn out elastomer parts or those stored for too long are used.
- Maintenance intervals are not observed.

| | | |
|-------------------------------------------|-----------------------------------------------------|---------------------------------------------------|
| Please observe protection note ISO 16016. | Drawn: 2022-11-29 Pz/Mai Verified: 2022-12-01 Pz | Replacing: KTR-N dated 2021-02-22 Replaced by: |
|-------------------------------------------|-----------------------------------------------------|---------------------------------------------------|



6 Breakdowns, causes and elimination

| Breakdowns | Causes | Elimination |
|--------------------------------------------------------------------------------------------------------------------------------------------------------------|---------------------------------------------------------------------------------------------------------------------------------------------------|--------------------------------------------------------------------------------------------------------------------------------------------------------------------------------------------------------------------------------------------------------------------------------------------------------------------------------------------------------------------------------------------|
| Different operating noise and/or vibrations occurring | Errors in alignment, too high displacement, internal contact of coupling components | 1) Set the unit out of operation 2) Eliminate the reason for the misalignment (e. g. loose foundation bolts, fracture of the engine mount, heat expansion of unit components, modification of the installation dimension E of the coupling) 3) For visual inspection/inspection of wear see chapter 8 <i>Maintenance</i> |
| | Axial fastening of hubs working loose and screw connection unfastened | 1) Set the unit out of operation 2) Inspect alignment of coupling 3) For visual inspection/inspection of wear see chapter 8 <i>Maintenance</i> 4) Secure the hubs axially and against working loose |
| Fracture of elastomer part | Fracture of elastomer part/ high dynamic energy/ overload | 1) Set the unit out of operation 2) Disassemble the coupling and remove remainders of the elastomer part 3) Inspect coupling components and replace coupling components that are damaged 4) Insert elastomer part, assemble coupling components 5) Find out the reason for overload |
| | Operating parameters do not meet with the performance of the coupling | 1) Set the unit out of operation 2) Review the operating parameters and select a bigger coupling (consider mounting space) 3) Assemble new coupling size 4) Inspect alignment |
| | Operating error of the unit | 1) Set the unit out of operation 2) Disassemble the coupling and remove remainders of the elastomer part 3) Inspect coupling components and replace coupling components that are damaged 4) Insert elastomer part, assemble coupling components 5) Instruct and train the service staff |
| High rotational angles during operation, formation of wrinkles up to external cracks in the elastomer part, fracture of elastomer, internal depolymerisation | Vibrations of drive, resonance in the elastomer | 1) Set the unit out of operation 2) Disassemble the coupling and remove remainders of the elastomer part 3) Inspect coupling components and replace coupling components that are damaged 4) Insert elastomer part, assemble coupling components 5) Inspect alignment, adjust if necessary 6) Find out the reason for vibrations (selection of loads) |
| | Ambient/contact temperatures which are too high for the elastomer part, max. permissible -30 °C/+80 °C | 1) Set the unit out of operation 2) Disassemble the coupling and remove remainders of the elastomer part 3) Inspect coupling components and replace coupling components that are damaged 4) Insert elastomer part, assemble coupling components 5) Inspect alignment, adjust if necessary 6) Inspect and adjust ambient/contact temperature |
| | E. g. contact with aggressive liquids/oils, influence by ozone, too high ambient temperature etc. causing a physical change of the elastomer part | 1) Set the unit out of operation 2) Disassemble the coupling and remove remainders of the elastomer part 3) Inspect coupling components and replace coupling components that are damaged 4) Insert elastomer part, assemble coupling components 5) Inspect alignment, adjust if necessary 6) Make sure that other physical modifications of the elastomer part are excluded |



7 Disposal

In respect of environmental protection we would ask you to dispose of the packaging resp. products on termination of their service life in accordance with the legal regulations resp. standards that apply.

- **Metal**
Any metal components have to be cleaned and disposed of by scrap metal.
- **Nylon materials**
Nylon materials have to be collected and disposed of by a waste disposal company.

8 Maintenance and service

We recommend to perform a visual inspection on the coupling **at least once a year**. Pay special attention to the condition of the elastomer part of the coupling.

- Remove loose dirt from the coupling.
- Inspect the coupling for spalling or missing components, if necessary. Inspect the elastomer part in particular for cracks.
- Defective components must be replaced immediately resp. missing components must be replaced immediately.
- Inspect and correct the tightening torques of all screw connections, if necessary.
- Since the flexible machine bearings of the driving and driven side settle during the course of load, inspect the alignment of the coupling and re-align the coupling, if necessary.

Please perform visual inspection as follows:

- Inspect adhesion of the elastomer to the metal insert.
- Inspect the elastomer part for wrinkles or cracks in the areas marked with ①, ②, ③, ④ and ⑤ in illustration 35. Formation of wrinkles is trouble-free, but dependent on the application may generate cracks in the long run. If the cracks in the areas marked achieve or exceed the limit specified in table 17, the elastomer part must be replaced.



Elastomer parts that are damaged or worn off have to be replaced, with the maintenance interval of the engine at the latest.

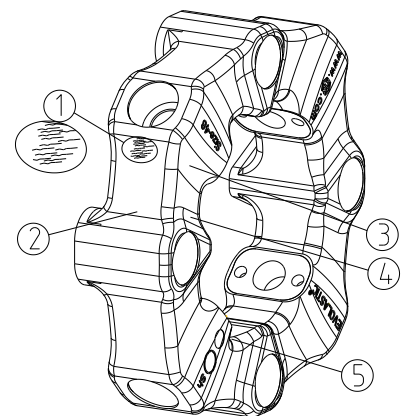



Illustration 35: Visual inspection

Table 17: Crack depth

| Size | 12 | 24 | 32 | 48 | 60 | 86 | 125 | 200 | 280 | 360 | 560 |
|-----------------------------|-----|-----|-----|-----|-----|-----|-----|-----|-----|-----|------|
| Max. perm. crack depth [mm] | 3.0 | 4.0 | 4.0 | 4.0 | 4.0 | 4.0 | 6.0 | 6.0 | 6.0 | 8.0 | 10.0 |

| | | |
|---------------------------------------------------------------------------------------------------|---------------------------------------------------------------------------------------------------|-------------------------------------------------|
|  KTR-Group | EVOLASTIC® Operating/Assembly instructions Type EP, EHP, E2HP and EFHP | KTR-N 48612 EN Sheet: 24 of 24 Edition: 2 |
|---------------------------------------------------------------------------------------------------|---------------------------------------------------------------------------------------------------|-------------------------------------------------|

9 Spares inventory, customer service addresses

We recommend to store major spare parts on site to ensure the readiness for use of the machine in case if a coupling fails.

Contact addresses of the KTR partners for spare parts and orders can be obtained from the KTR homepage at www.ktr.com.



KTR does not assume any liability or warranty for the use of spare parts and accessories which are not provided by KTR and for the damages which may incur as a result.

KTR Systems GmbH
Carl-Zeiss-Str. 25
D-48432 Rheine
Phone: +49 5971 798-0
E-mail: mail@ktr.com

| | | |
|-------------------------------------------|-----------------------------------------------------|---------------------------------------------------|
| Please observe protection note ISO 16016. | Drawn: 2022-11-29 Pz/Mai Verified: 2022-12-01 Pz | Replacing: KTR-N dated 2021-02-22 Replaced by: |
|-------------------------------------------|-----------------------------------------------------|---------------------------------------------------|