

Made for Motion



A BROAD RANGE OF APPLICATIONS

Solutions for agricultural machinery

■ Drive Technology ■ Hydraulic Components ■ Cooling Systems

Perfect connections for agricultural machinery

Application of our products:

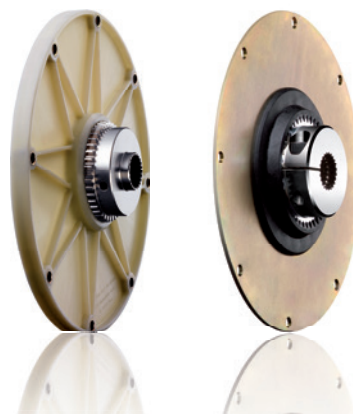
						
	ROTEX®	BoWex® FLE-PA BoWex® FLE-PAC	MONOLASTIC®	BoWex- ELASTIC®	Hydraulic oil cooler OAC	Combined cooler MMC
Forage harvesters	■			■		■
Feed mixers	■	■	■		■	■
Forestry machines	■	■		■	■	■
Farm loaders		■	■		■	■
Combine harvesters	■	■		■		■
Crop protection sprayers	■	■	■	■	■	■
Stump grinders		■	■			
Telescopic handlers		■	■	■		■
Grape harvesters	■	■	■	■		■
Biogas plants	■					
Wood splitters	■				■	




ROTEX®
 SINCE 1967

ROTEX® Torsionally flexible jaw coupling

- Jaw coupling for power transmission damping torsional vibrations
- Axial plug-in, easy assembly, maintenance-free
- Standard spiders made of high temperature-resistant T-PUR
- Application range of T-PUR from – 50 °C to + 120 °C, temperature peaks up to + 150 °C
- Spline toothings acc. to DIN and SAE
- Inch and taper bores



BoWex® FLE-PA / FLE-PAC Torsionally rigid curved-tooth flange coupling

- For all hydrostatic drives, e. g. construction and harvesting machinery
- High torsion spring stiffness, resonance-free operation
- Maintenance-free due to material combination nylon/steel
- PA flange providing for high mechanical strength and thermal stability
- PAC flange having excellent resistance to wear with high load
- Numerous flanges available with special connection dimensions
- Torques from 240 to 6,600 Nm



BoWex-ELASTIC® Highly flexible flange coupling for I. C.-engine drives

- Engine power up to 7,500 kW
- Axial plug-in, easy assembly
- Specifically short dimensions
- Damping torsional vibrations
- For instance for the drive of generators, water pumps, compressors
- Available as a Shore hardness 40, 50, 65 and 70 Shore A



MONOLASTIC® One-piece, elastic flange coupling

- For the drive in diesel engine/hydraulic pump up to 300 kW
- Available in different kinds of Shore hardness
- Axial plug-in in combination with the pump spline shaft
- Available for SAE and DIN pump spline shafts
- Flange connection with 3 holes and acc. to SAE



Combined cooler MMC

- High-performance cooler made of aluminium to be combined for various media
- Water, oil, charge air and fuel cooler
- Type for harsh operating conditions
- Selection in accordance with customized specifications
- Selection of laminae adapted to the application
- System engineering covering sophisticated overall systems including fans and various kinds of drive technologies
- Thickness of block from 32 to 200mm
- Cooler geometries adapted to the mounting situation



Oil/air cooler OAC

- High-performance cooler cores made of aluminium for a maximum static operating pressure of 26 bar
- Suitable for hydraulic oil, gear oil, lubricating oil, motor oil and water-glycol
- Fan drive available as 12V, 24V and hydraulic drive
- Easy to maintain and good options of cleaning
- Low sound pressure level
- CE marking
- Optionally available with corrosion-resistant coating

Hydraulic oil coolers OAC

A compact and powerful cooler series covering twelve sizes was developed for high-performance cooling of hydraulic and lubricating oils.

Structure:

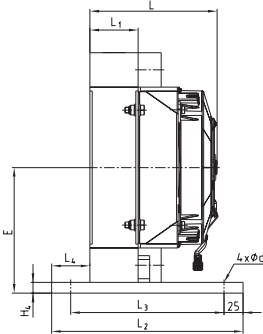
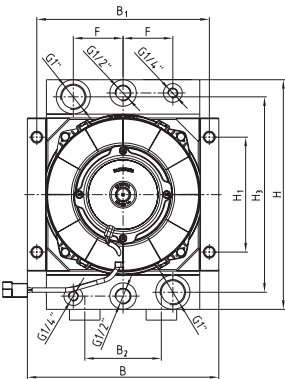
- Cooler core (plate and bar) made of aluminium with industrial lamina in black (RAL 9005)
- Fan cover made of steel in black (RAL 9005)
- Fan made of nylon PAG
- Protective grid made of steel in black (RAL 9005)
- Fan 12/24V IP68
- Fan with hydraulic drive

Suitable for cooling of:

- Hydraulic oil
- Gear oil
- Lubricating oil
- Water-glycol (at least 40 % glycol)

Accessories:

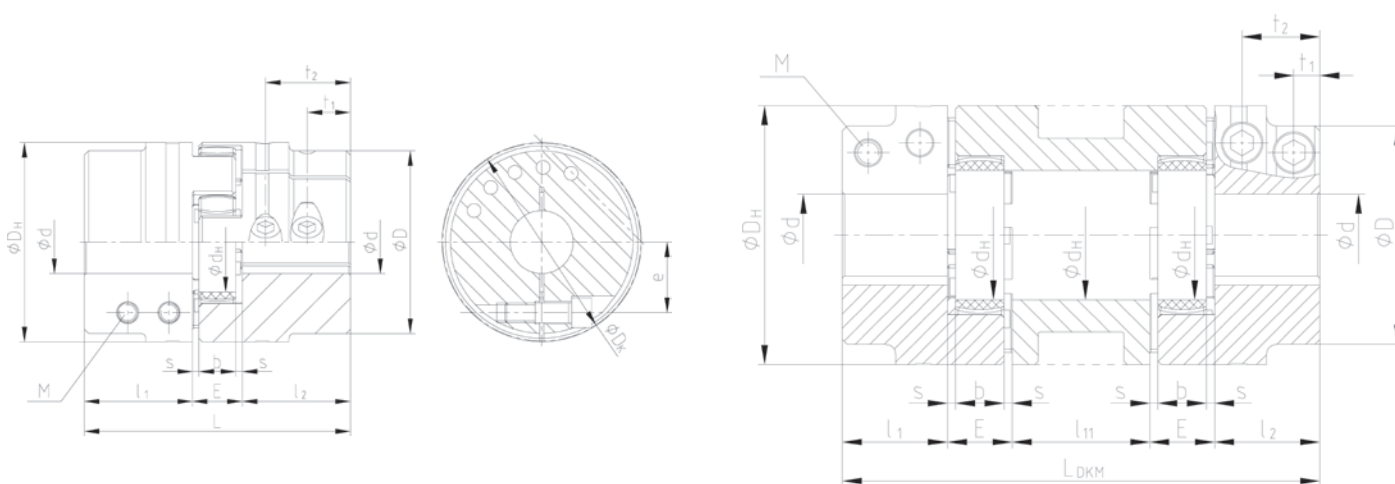
- Thermal bypass valve
- Oil temperature control valve (OTV)
- Protective grid
- Temperature switch (TSC)



ROTEX® with PTO shaft connection

The ROTEX coupling with PTO shaft was specifically developed for connectable mechanical auxiliary drives of agricultural machines and other mobile machines. The application range includes, among others, forestry mulchers, loader wagons, presses, manure spreaders and trailers as well as rotary piston pumps and compressors positioned on self-propelled harvesters and towed attachments.

Special lengths as an alternative to a cardan shaft available on request



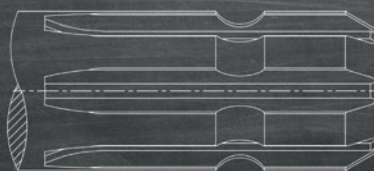
Size	Spider Rated torque (Nm)				Bore diameter d PTO shaft connection				General														Clamping screw	
	92 Sh A	98 Sh A	64 Sh D	PA	1 3/8" z=6	1 3/8" z=21	1 3/4" z=6	1 3/4" z=20	DH	L	l1/ l2	E	b	s	dH	DK	t1	t2	e	D	LDK	M	Ta (Nm)	
38	190	325	405	565	■	■			80	114	45	24	18	3	38	77,5	19	-	26,5	70	171/211	M8	35	
42	265	450	560	785	■	■		■	95	126	50	26	20	3	46	93,5	18	-	32	85	178/218	M10	69	
48	310	525	655	915	■	■		■	105	140	56	28	21	3,5	51	105	21	-	36	95	190/230	M12	120	
55	410	685	825	1200	■	■	■		120	160	65	30	22	4	60	119,5	26	51	42,5	110	200/240/280/300	M12	120	
65	625	940	1175	1645		■		■	135	165	65	35	26	4,5	68	132,5	23	51	50	115	240/280	M12	120	
75	1280	1920	2400	2560	■	■	■	■	160	170	65	40	30	5	80	158	16	48	57	135	235/275/295/345	M16	295	
90	2400	3600	4500	6300			■	■	200	205	80	45	34	5,5	100	197	20	60	72	160	263/333	M20	580	
110	4800	7200	9000	10500				■	255	205	75	55	42	6	127	218	30	-	76	200	336	M24	1000	

Other sizes available on request

1 3/8", 6 teeth



1 3/4", 6 teeth



1 3/4", 20 teeth



Technical data

- Spline bore acc. to DIN 9611/ISO500 (PTO shaft connection)
- PTO shaft speed: 540, 750, 1,000, 1,400 RPM
- Power range up to 367 kW/500 HP
- Hub material steel S355J2G3 (ST52-3)

Product features

- Single- or double-cardanic
- Damping vibrations
- Axial plug-in
- Backlash-free shaft-hub-connection
- Short dimensions
- Maintenance-free

Example in the field

ROTEX® with PTO shaft connection and OAC hydraulic oil cooler

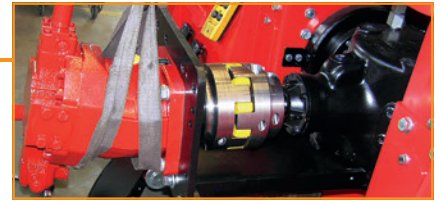
ROTEX® 110 with PTO shaft connection

1 3/4" - 20 teeth, between hydraulic motor and gearbox in a forestry mulcher



Technical data/drive

- Trated = 1000 Nm
- N = 2500 RPM
- Temperature = up to 70 °C



Hydraulic oil cooler OAC 200 (12 volts)

For cooling the hydraulic system in a self-propelled harvester



Technical data/drive

- OAC200-01-0-0 (12V)
- Cooling capacity: 3.8 kW
- Temperature switch 50 °C
- Motor IP68
- 8.2 amperes



Headquarter

KTR Systems GmbH

Carl-Zeiss-Str. 25

D - 48432 Rheine

Phone: +49 5971 798-0

Fax: +49 5971 798-698 or 798-450

E-mail: mail@ktr.com

For you on site throughout the world: ktr.com > contact

Made for Motion

