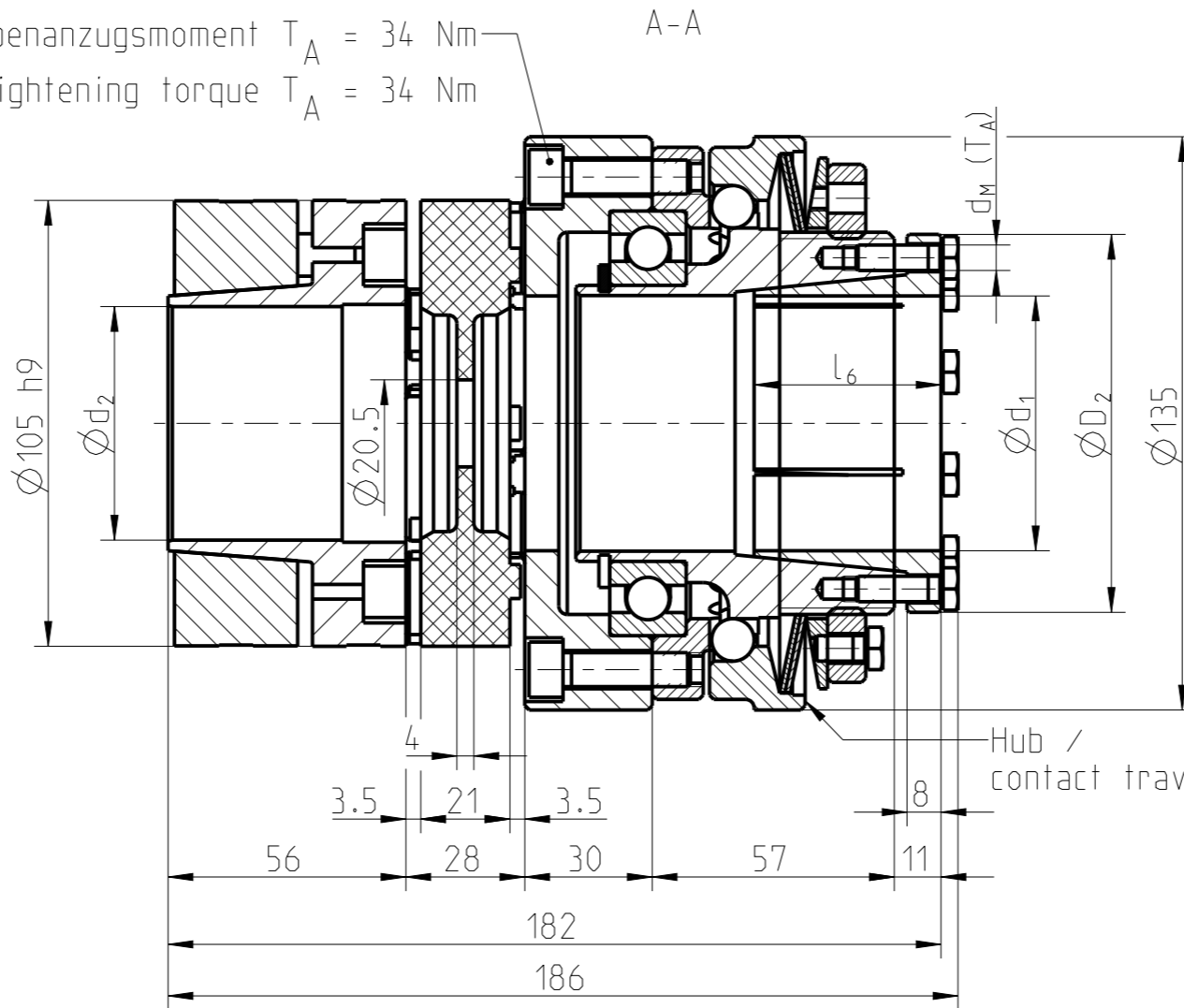
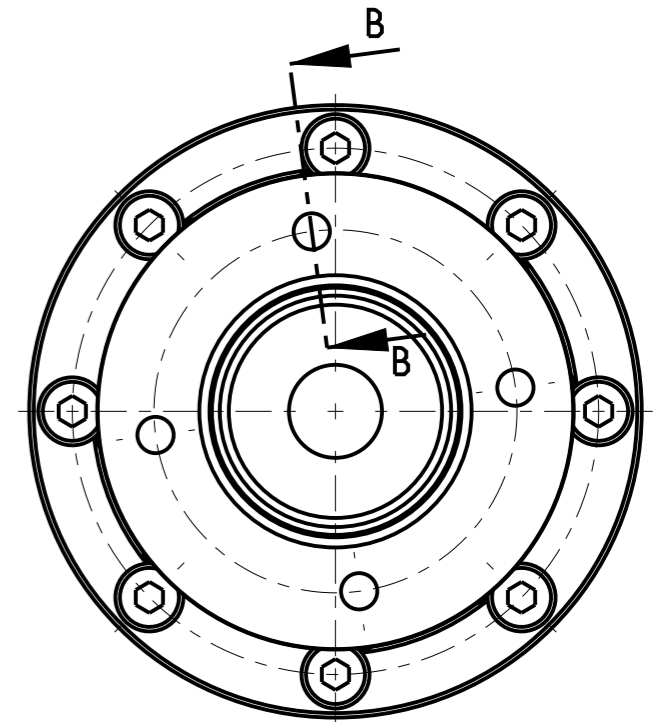


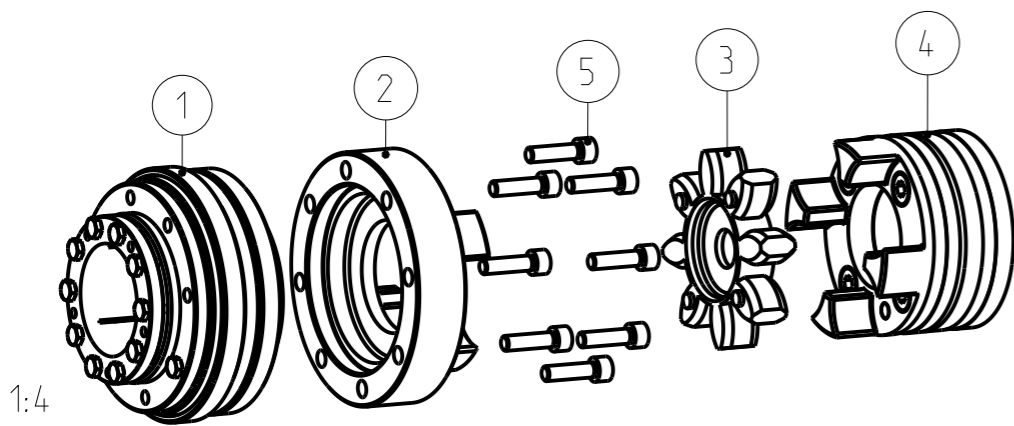
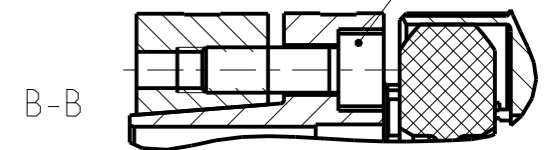
Schraubenanzugsmoment  $T_A = 34 \text{ Nm}$   
 Screw tightening torque  $T_A = 34 \text{ Nm}$



Hub / contact travel 2.2 mm



Schraubenanzugsmoment  $T_A = 69 \text{ Nm}$   
 Screw tightening torque  $T_A = 69 \text{ Nm}$



ROTEX-GS 48

Drehmoment / Torque  
 Zahnkranz / spider 98 Sh-A T-PUR

$T_{KN} = 525 \text{ Nm}$

$T_{Kmax} = 1050 \text{ Nm}$

Massenträgheitsmoment ( $\varnothing d = \text{max.}$ ) /  
 Mass moment of inertia ( $\varnothing d = \text{max.}$ ):  $0.02 \text{ kgm}^2$

Dimensions (mm)											Torques (Nm)									Oberflächengüte nach DIN EN ISO 1302 Reihe 2 Surface quality acc. to DIN EN ISO 1302 line 2		Schutzvermerk ISO 16016 beachten Note protection mark acc. to ISO 16016						
$d_1$	$D_2$	$l_6$	$d_M$	$T_A$ (Nm)	T1	T2	T3	Allgemeintoleranzen nach General tolerances acc. to		DIN ISO 2768 - mH		Masstab Scale	3:5	Format Size	A3													
32-50	73.5	29	M6	10	80-185	160-370	320-740																					
55-60	89	44	M6	10																								
(Pos.1) Transmittable Torques $T_R$ (Nm)					(Pos.4) Transmittable Torques $T_R$ (Nm)											<b>KTR-SI 3 compact (DK/SK)          With ROTEX</b>				<b>KTR-SI 3 compact (DK/SK)          mit ROTEX</b>								
$d_1$	Ø32	Ø35	Ø38	Ø40	Ø42	Ø45	Ø48	Ø50	Ø55	Ø60	$d_2$	Ø30	Ø32	Ø35	Ø38									Ø40	Ø42	Ø45	Ø48	Ø50
H7/h8	680	700	740	780	820	870	930	970	1070	1160	H7/h6	616	704	899	896	1030	962	1160	1379	1222	1543	Datum Date	21.12.15	Norm Standard	M	653881	0	
											H7/h6	513	590	806	775	924	822	1042	1290	1073	Name	FE	Gewicht Weight	8.784 kg				