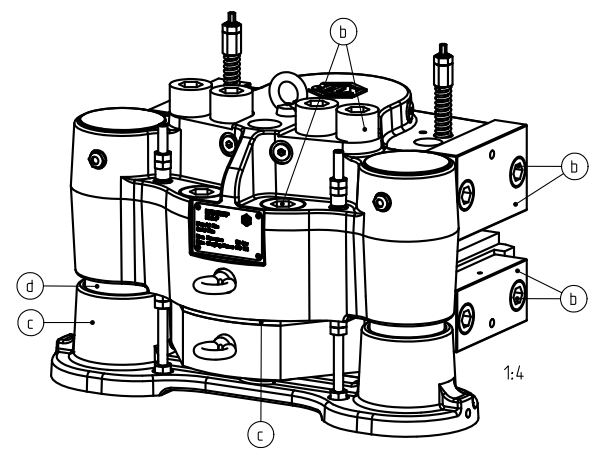
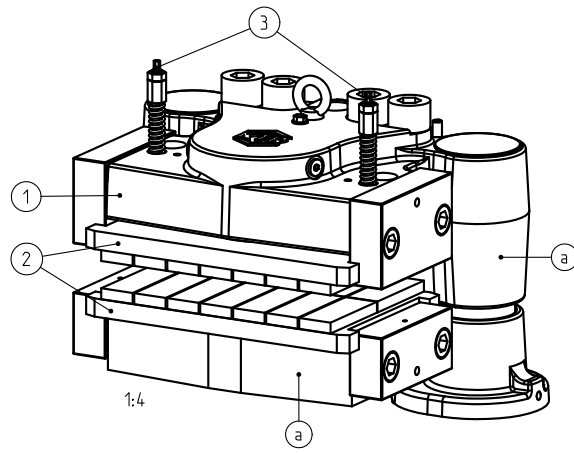
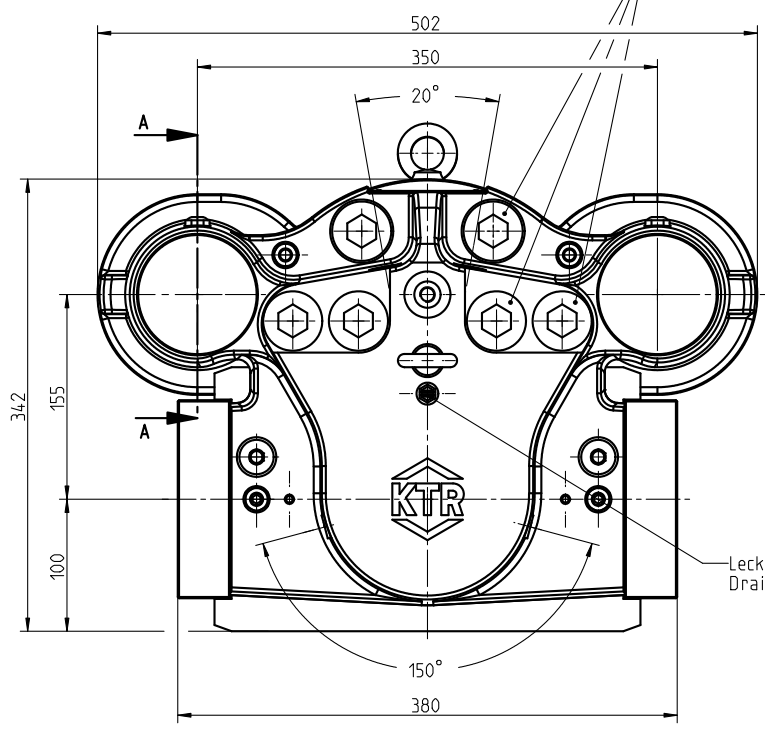


Schraubenanzugsmoment DIN EN ISO 4762 - M30 - 10.9:  $T_A = 1700$  Nm  
 Screw tightening torque DIN EN ISO 4762 - M30 - 10.9:  $T_A = 1700$  Nm

Schraubenanzugsmoment DIN EN ISO 4762 - M20 X 50 - 10.9:  $T_A = 560$  Nm  
 Screw tightening torque DIN EN ISO 4762 - M20 X 50 - 10.9:  $T_A = 560$  Nm



| Teil / part | Beschichtung / coating              |
|-------------|-------------------------------------|
| a           | RAL 5005 (signalblau / signal blue) |
| b           | Geomet                              |
| c           | Interzinc                           |
| d           | verchromt / chromed                 |

|  |          |   |           |            |           |            |    |
|--|----------|---|-----------|------------|-----------|------------|----|
| Oberflächengüte nach DIN ISO 1302 Reihe 2      |          | Schutzvermerk ISO 16016 beachten            |           |            |           |            |    |
| Allgemeintoleranzen nach DIN ISO 2768- mH      |          | Masstab                                     | Format A2 |            |           |            |    |
| <b>KTR-STOP M-A-F A-30</b><br><b>Massblatt</b> |          | KTR-Kupplungstechnik GmbH<br>D-48407 Rheine |           |            |           |            |    |
|  |          |   |           | gezeichnet | Werkstoff | Teilnummer | Kz |
| Datum  | 28.07.11 | DIN   |           |            | M         | 540866     | 0  |
| Bearb.   | L1       | Gewicht                                     | 168,973   |            |           |            |    |