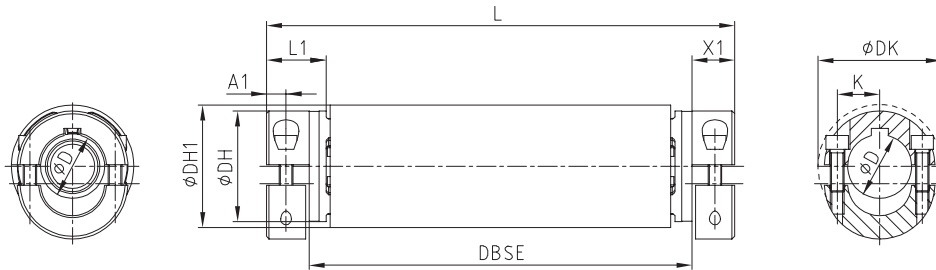
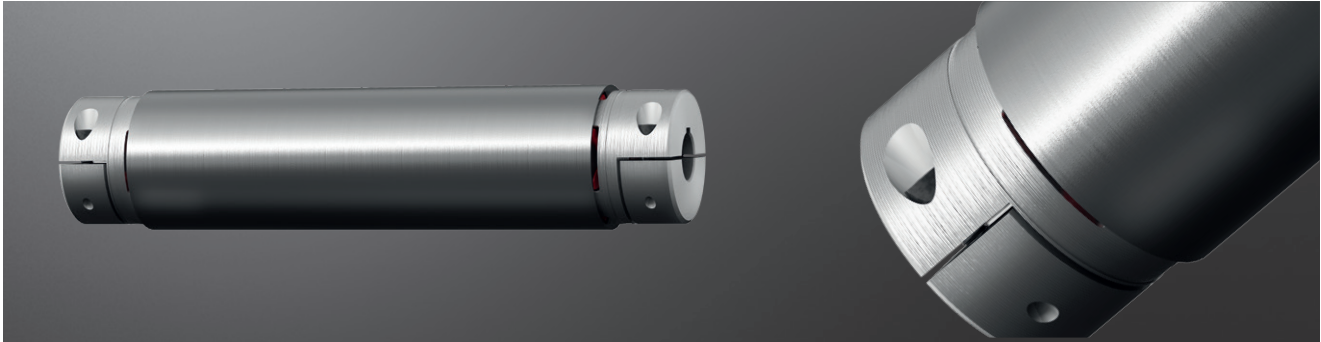


ROTEX® GS ZRS

Backlash-free intermediate shaft couplings

Intermediate shaft coupling with aluminium pipe



ROTEX® GS type ZRS

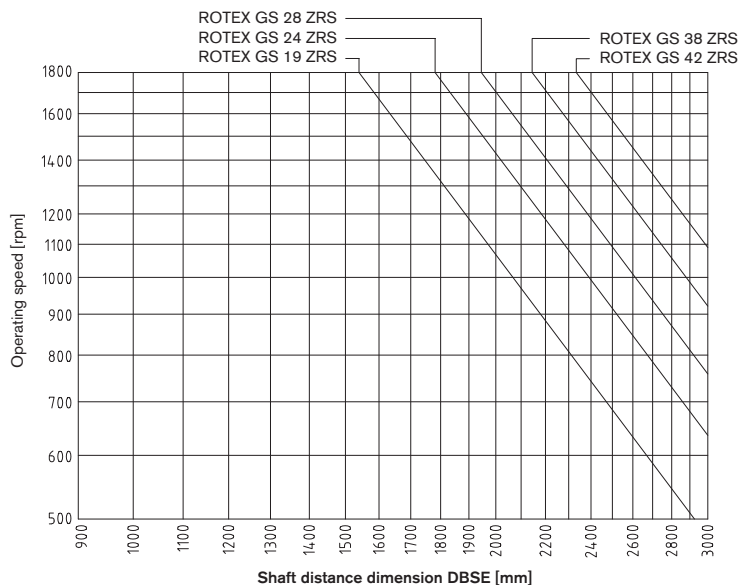
Size	Dimensions ³⁾ [mm]										Intermediate pipe Torsion spring stiffness C ²⁾ [Nm/rad]	Cap screws DIN EN ISO 4762		L ¹⁾ DBSE + 2 x X1	Min. DBSE
	Finish bore D		DH	DN1	L1	N	A1	K	DK	DH1		MxLM	Tightening torque T _A [Nm]		
	min.	Max.													
19	10	20	40	-	25	-	8.0	14.5	46.0	45	3800	M6x16	10	L = DBSE + 2 x X1	33
24	10	30	55	-	30	-	15.0	20.0	57.5	60	11100	M6x20	10		37
28	14	38	65	-	35	-	17.5	25.0	73.0	72	23600	M8x25	25		40
38	18	45	80	78	45	37.0	22.5	30.0	83.5	87	43800	M8x30	25		49
42	22	50	95	94	50	40.0	25.0	30.0	97.0	103	82600	M10x35	49		53

¹⁾ With inquiries and orders please specify the shaft distance dimension DBSE along with the maximum speed to review the critical bending speed.
Maximum DBSE = 4000 mm (different lengths on request).

²⁾ Torsion spring stiffness with an intermediate pipe length of 1 m

³⁾ Finish bore according to ISO fit H7, feather keyway according to DIN 6885, sheet 1 [JS9].

Diagramme of permissible operating speeds for type ZRS



Ordering
example:

ROTEX® GS 24	ZRS	1200 mm	98 ShA-GS	7.5 - Ø24	7.5 - Ø24		
Coupling size	Type	Shaft distance dimension (DBSE)	Spider hardness	Hub type	Finish bore	Hub type	Finish bore