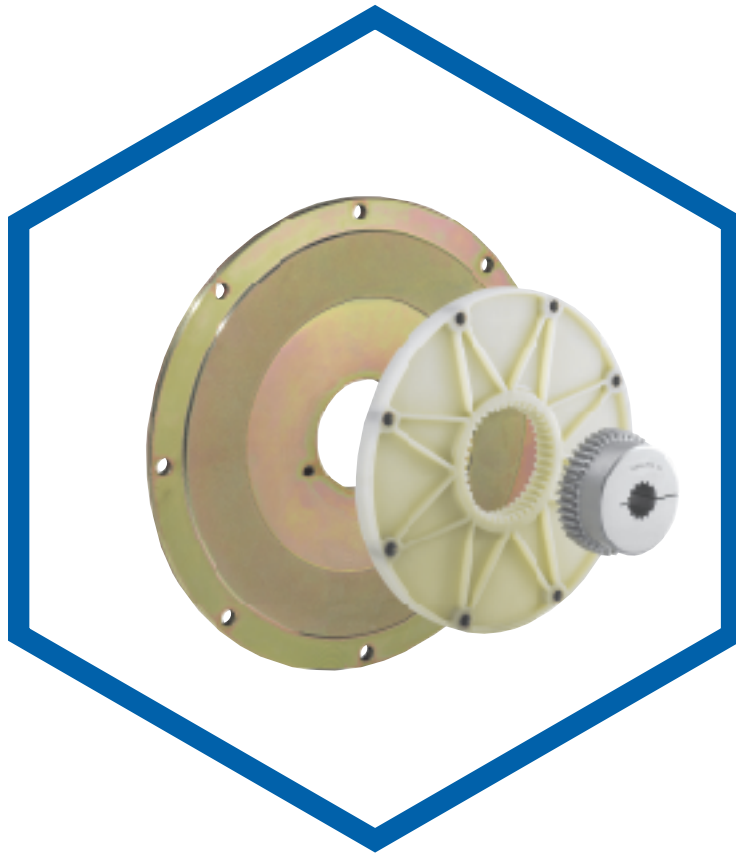


For advanced
drive
technology



BoWex®

Engine Drive Couplings & Pump Mounting Plates for Cummins B3.3 Series Engines

BoWex® 48T & 55T FLE Coupling Kit:
10" SAE Nylon Flange

Curved pump mounting plate
(fits SAE #4 short housing / A, B, C pump pilots)

Torque Specification:

| | 48T | 55T |
|-----------------|------------|------------|
| Nominal Torque: | 225 lb ft | 332 lb ft |
| Maximum Torque: | 550 lb ft | 830 lb ft |

Coupling Benefits:

HIGHER SAFETY FACTOR

- Patented Star Pattern

NON-LUBRICATED ASSEMBLY

- Nylon / Metal Design

ACCEPTS MISALIGNMENTS

- Crowned Gear Teeth

HEAT STABLE

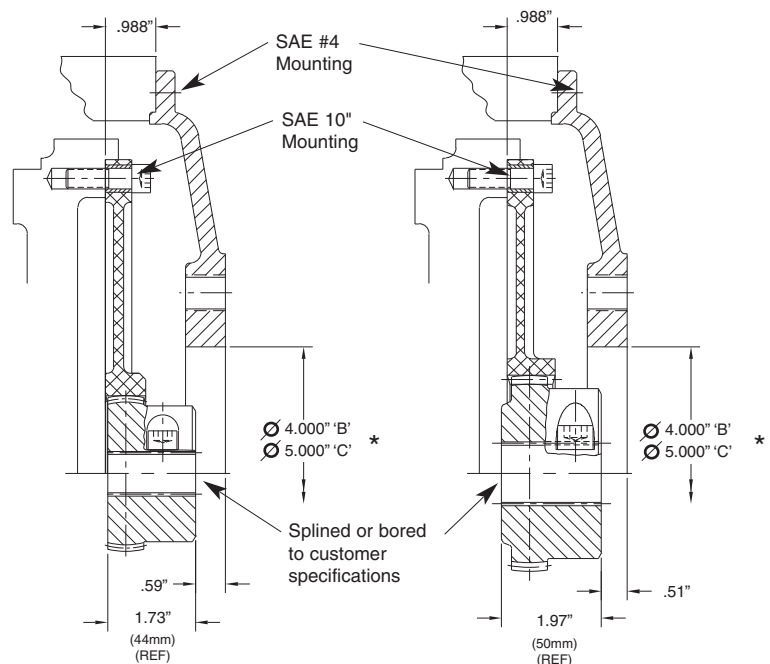
- (250° F)
- Fiberglass/Nylon Flange

Proven Reliability

- More than 500,000 field installations in 20 years.

Naturally Aspirated
Short Housing

Turbocharged
Short Housing



BoWex® 48T

BoWex® 55T

* = SPECIFY PILOT SIZE

KTR CORPORATION

P.O. Box 9065 • Michigan City, IN • 46361

Phone: 219-872-9100 • Fax: 219-872-9150

E-mail: ktr-us@ktr.com • Internet Site: www.ktrcorp.com

BW-CW-'03