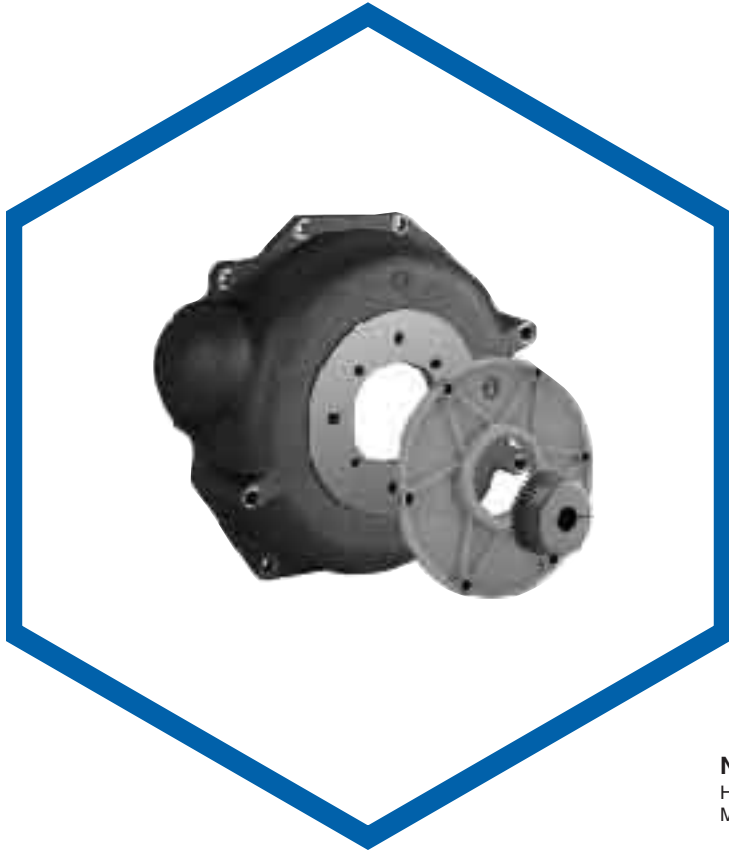


For advanced
drive
technology



BoWex®

Engine Drive Couplings &
Pump Mounting Plates for
Cummins "A" series Engine
2300 & 2300T Engine
2000, 1700 & 1400 Engine



BoWex® for Cummins "A" Series Engine Drive Coupling* & Bell Housing for hydraulic driven components. Aerial Lifts, forklifts, commercial lawn mowers, excavators, wheel and skid steer loaders, dozers and many more.

Fits Cummins A-series engines equipped with Cummins options FH35004 starter plate and FW35002, SAE 7 1/2" flywheel.

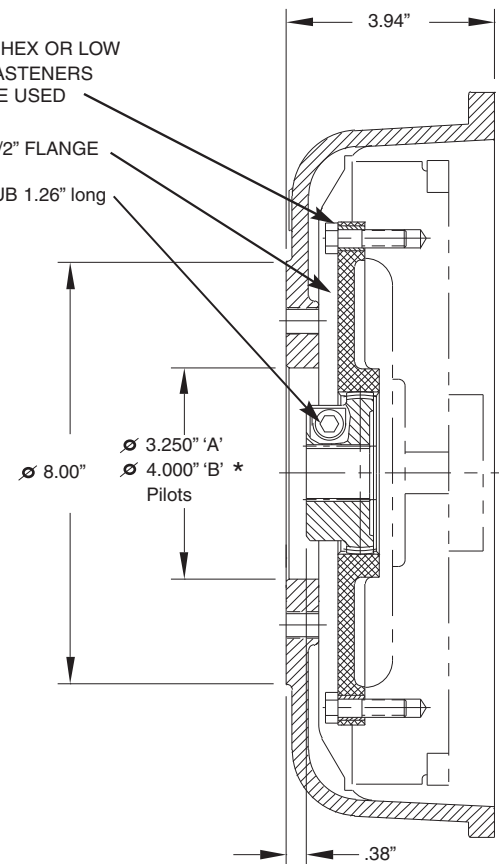
To Order:
SAE 'A' Pilot= ASSY 1913
SAE 'B' Pilot= ASSY 1914

Order hub separately & specify spline or bore size.
(42 hub-1.26" long)
Turbocharged engines require 48T hub-1.26" long.
(Mounting fasteners not supplied)

NOTE: HEX OR LOW
HEAD FASTENERS
MUST BE USED

SAE 7-1/2" FLANGE

42ED HUB 1.26" long



* = SPECIFY PILOT SIZE

KTR CORPORATION

P.O. Box 9065 • Michigan City, IN • 46361
Phone: 219-872-9100 • Fax: 219-872-9150
E-mail: ktr-us@ktr.com • Internet Site: www.ktrcorp.com

BW-CM-'03