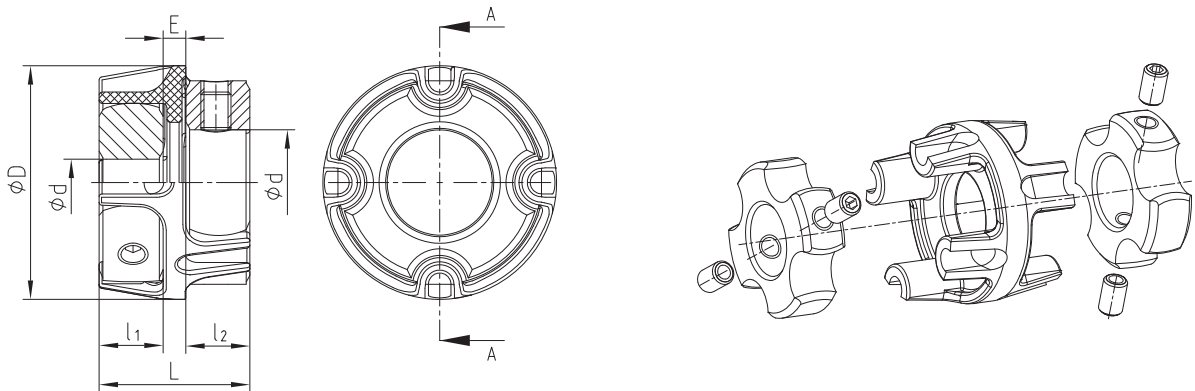


Double-cardanic for measuring drives



- Backlash-free shaft connections for measurement drive with small torques
- 3-parted double-cardanic coupling
- Small dimensions - low flywheel mass
- Axial plug-in – easy blind assembly
- Available from stock with usual shaft dimensions
- Finish bore acc. to ISO fit H7, keyway from Ø 6 mm acc. to DIN 6885 sheet 1 - JS9



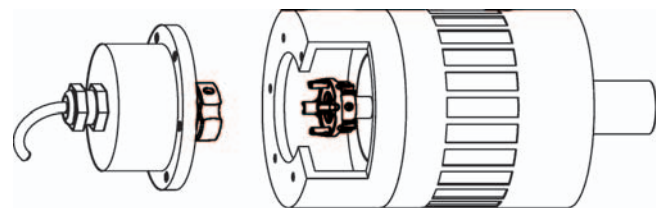
COUNTEX®											
Size	Torque [Nm]		Dimensions [mm]						Displacements		
	T _{KN}	T _{Kmax.}	d _{min.}	d _{max.}	D	l ₁ /l ₂	E	L	radial ΔK _r [mm]	axial ΔK _a [mm]	angular ΔK _w [°]
6	0,3	0,6	2	6	15	4	4	12	0,05	-0,3/+0,6	0,36
14	1,0	2,0	5	14	30	8	4	20	0,12	-0,5/+1,0	0,57

General description

COUNTEX® is a three-parted, backlash-free and torsionally stiff coupling mainly used in measuring and control technology. Its axial plug-in ability combined with the geometry of hubs results in a coupling system with a specifically easy assembly offering options of mounting fitting with processing.

Measuring and control technology

The measuring and control technology demands for a high torsion spring stiffness of the coupling in order to realize reproduceable positioning. The torques that arise are relatively low so that a backlash-free, torsional stiff power transmission is achieved subject to the elastomer prestress. The double-cardanic principle of COUNTEX® reduces the restoring forces to a minimum.



Order form:	COUNTEX® 14	Ø6,35	Ø10
	Coupling size	Finish bore Ød ₁	Finish bore Ød ₂

KTR Kupplungstechnik GmbH

P.O. Box 1763
D-48407 Rheine
Phone: +49(0)5971 798-0
Telefax: +49(0)5971 798-698 u. 798-450
E-mail: mail@ktr.com
Internet: www.ktr.com