

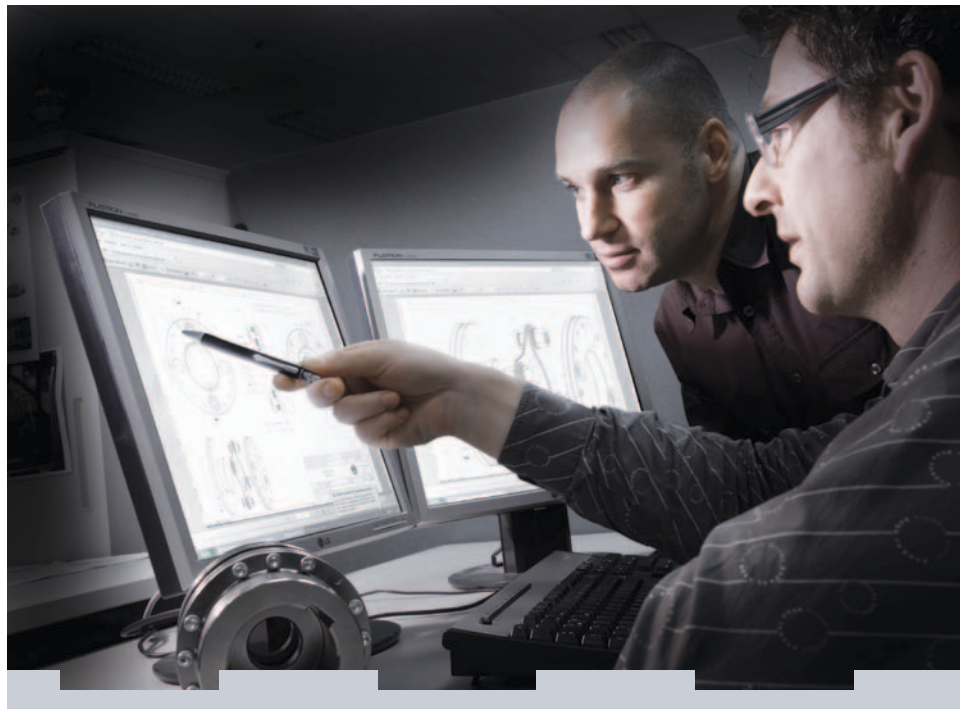
## Made by KTR

Production, Processes, Quality and Environmental Management

Made for Motion



[www.ktr.com](http://www.ktr.com)



## Your demands are driving us

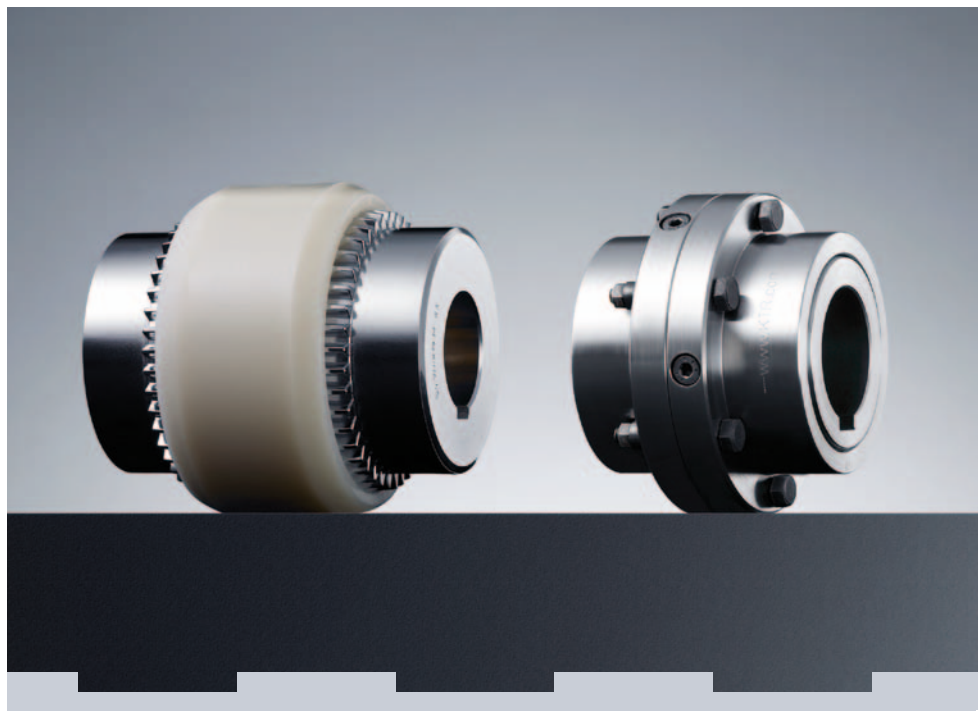
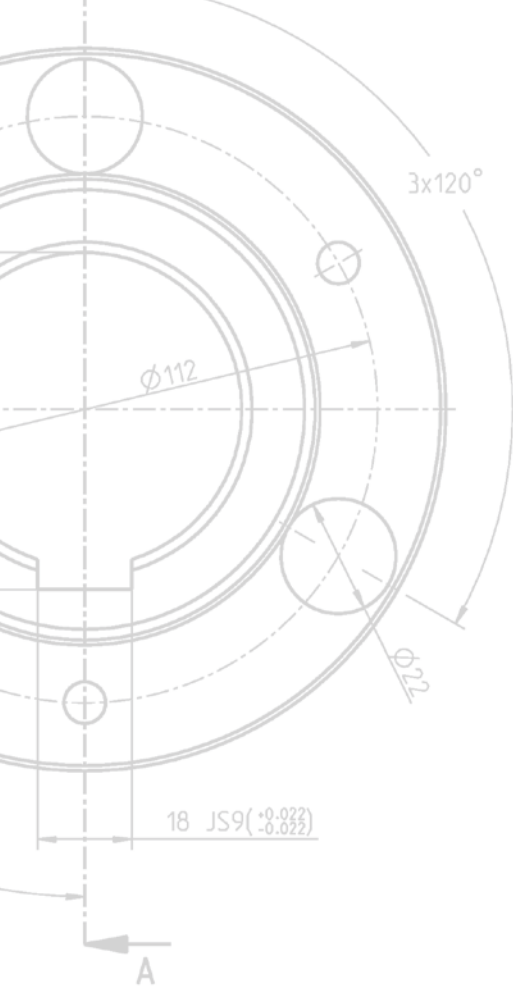
Everything we do at KTR we do for you, our customers. We want to satisfy you, not only today, but also in the future. That is why we create our products and services according to your needs and demands. That is why we handle everything in house - production, quality assurance and environmental management.

### Objectives and plans

In our world of continuous change it is essential to keep on changing. KTR is made for motion not only with regard to their products, but also with regard to their company policy. For 50 years we have been working on progressing the drive technology: for higher power and greater safety, for innovation and efficiency, for the current and future success of our customers.

The basis is our integrated management system consisting of quality, environmental and occupational safety management. Our company objectives are defined as follows:

1. Highest customer satisfaction
2. Continuous improvement of quality
3. Treating the environment with as much care as possible



## Markets and potential

We at KTR are proud of our products. We are proud of them leading to improved features and a higher service life of the overall drive systems. That is why they are appreciated, popular or even indispensable in numerous industries. We are pleased that they open new options for drive technology – as well as assisting us to enter new and bigger markets.

Every member of the KTR staff takes their share in the responsibility of adhering to our quality standards. It goes without saying that our quality management system is certified in accordance with DIN EN ISO 9001, both in Germany and the USA and India. In addition, our company has been awarded the certificate for environmental management in accordance with DIN EN ISO 14001.

Based on our integrated management system we are aiming for continuous improvement of our efficiency as a reliable partner of our customers.

## Design and production

KTR products meet with the highest quality standards because they are actually manufactured by KTR. Even before the design work starts in detail, we perform torsional vibration analysis of complete drive systems to ensure that everything runs smoothly and efficiently.

Our highest engineering efforts would not be of any benefit to our customers if our production process was not able to produce the products to the exacting details demanded during the design process.

And since we believe that there is nobody who can do it better, we are doing it for ourselves.

Our in-house production facilities in our headquarter in Germany as well as in our production facilities at our subsidiary companies in the USA, India and China, we achieve the same high quality for our products for all customers throughout the world.





## The better the coupling, the better the drive

### Preparation and processing

Our state-of-the-art data processing system allows us to plan and control the entire production facility and produce “real time” data. Through online integrated operational data in our ERP system we can accurately follow each production process and pin point the exact location of our customers products.

### Accuracy and speed

Our products are manufactured by utilising the latest machine technology that are able to turn, mill, grind, tooth, drill and balance automatically. After these operations we measure the dimensional accuracy by utilising 3D coordinate measuring machines. We manufacture couplings having a weight between 50 grams and 2 tons and having an outside diameter between 10 mm and 1.40 m with the highest possible accuracy

KTR's production machines are always state-of-the-art. The combination of several machines and processes allows us to reduce the machining time and we are able to maximise flexibility through by the variable use of machines. This allows us to produce individual components quickly and at low cost.

### Quantities and materials

We produce millions of standard products and components as per our customer's specifications every year. We can machine steel, aluminium and cast materials as well as natural rubber and a wide range of nylon materials, in particular elastomers. We continuously adapt all these materials to aid with the technical development of our products. KTR application engineers are happy to help you with the selection of the suitable material for your application.



### **Confidence is acceptable, but certification is better**

The quality of KTR couplings and components is well-known throughout the world. To assure our customers that all processes including development and customer service meet with the highest demands, we have them certified. Being one of the first companies in drive technology, KTR was certified in accordance with DIN EN ISO 9001 as early as 1993. We are continuously looking at ways in which to optimise our company processes. We are not satisfied with meeting the demands of this approval, we want to surpass it!

### **It is best to test**

Our quality assurance starts a long time before the production starts. We are proud of being able to test the products we manufacture in realistic operating conditions. In our in-house test centre we run long-term and short-term tests on our servo-hydraulic and mechanical test benches to find out the parameters of our couplings. For applications in a special environments, we have created special testing conditions, for example climate tests to simulate artificial ageing of elastomers.

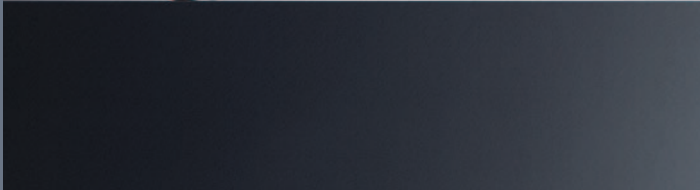


### **The following is a summary of KTR's main quality standards**

- The objective of the highest customer satisfaction characterises our operations.
- Every member of our staff acts independently to ensure full customer satisfaction.
- It is a major task of our management staff to encourage the awareness of quality.
- Avoiding mistakes has priority over correcting mistakes.
- It is the duty of all our staff to improve quality.



**Everything that helps the environment helps us**



### **Responsibility and improvements**

Environmental protection is a vital company objective for KTR. By encouraging environmental awareness at KTR, we have already achieved a great deal and would like to accomplish even more in the future.

All members of our staff have been given more environmental information and training in order to improve awareness. All decisions are considered taking into account environmental aspects and exceeding legal provisions as far as possible. We want to show that measures protecting the environment can be achieved within a reasonable economic framework.

KTR has been certified in accordance with DIN EN ISO 14001 since 2008. We are regularly audited to ensure that our environmental management system are up to date and are operating correctly.

## **The following is a summary of KTR's main environmental standards**

- Environmental protection is very important.
- We want to keep our effect on the environment as low as possible.
- The environmental compatibility of the products and production plants are subject to a continuous improvement process.
- We are obliged to respect all environmental laws and provisions that are relevant for us.
- Open and detailed information, the dialogue with our customers, subcontractors, sales partners and the public is expected.
- All members of our staff are informed about environmental protection according to their job function.
- Every year we set detailed and measurable objectives and make every effort to achieve them.



## **Being more ecological, being more economic**

Treating all resources responsibly is always practised by KTR – starting with the economical use of and the maximum possible recycling of raw materials and the efficient use of energy during all operating processes.

The materials used by KTR for production are environmentally compatible and recyclable almost 100 %. With all materials we prefer to preserve, clean and recycle to waste disposal. Only if the material is not reusable, it is disposed of respecting the corresponding environmental provisions. All suppliers to KTR are obliged to adhere to the prohibition list of dangerous materials according to the EU standard.

We are working similarly in information and communication technology: Green IT is no longer an illusion for KTR, but part of our daily routine. The overall life cycle of our IT system follows the idea of treating the environment and resources with care.

## **Sustainability provides for future safety**

Ecological, economic and social sustainability is a prerequisite for a sustainable development – both in our company and the world as a whole. To safe guard our future we are permanently trying to improve all company processes, we want to continue to help to create the future of drive technology. Here stagnation would mean a backward step, this is something that we cannot accept. As we say: KTR is Made for Motion



## KTR worldwide:

### Belgium/Luxemburg

KTR Benelux B. V. (Bureau Belgium)  
Blancefloerlaan 167/22  
B-2050 Antwerp  
Phone: +32 3 2110567  
Fax: +32 3 2110568  
E-mail: ktr-be@ktr.com

### Brazil

KTR do Brasil Ltda.  
Rua Henrique Coelho Neto 381 –  
Barracao I, Nucleo C. Pinhais  
CEP: 83321-030,  
Pinhais, PR  
Phone: +55 41 36 68 99 26  
Fax: +55 41 36 53 62 90  
E-mail: ktr-br@ktr.com

### China

KTR Power Transmission Technology  
(Shanghai) Co. Ltd.  
Floor 1 & 2, Bldg. B  
No. 1501 JinSui Road  
Pudong  
Shanghai 201206  
China  
Phone: +86 21 50 32 08 80  
Fax: +86 21 50 32 06 00  
E-mail: ktr-cn@ktr.com

### Czech Republic

KTR CR, spol. s. r. o.  
Olomoucká 226  
CZ-569 43 Jevicko  
Phone: +420 461 325 014  
Fax: +420 461 325 162  
E-mail: ktr-cz@ktr.com

### Finland

KTR Finland OY  
Tiistinniityntie 2  
SF-02230 Espoo  
PL 23  
SF-02231 Espoo  
Phone: +358 2 07 41 46 10  
Fax: +358 2 07 41 46 19  
E-mail: ktr-fi@ktr.com

### France

KTR France S.A.R.L.  
46 – 48 Chemin de la Bruyère  
F-69570 Dardilly  
Phone: +33 478 64 54 66  
Fax: +33 478 64 54 31  
E-mail: ktr-fr@ktr.com

### Great Britain

KTR Couplings Ltd.  
Robert House  
Unit 7, Acorn Business Park  
Woodseats Close  
Sheffield,  
England, S8 0TB  
Phone: +44 11 42 58 77 57  
Fax: +44 11 42 58 77 40  
E-mail: ktr-uk@ktr.com

### India

KTR Couplings (India) Pvt. Ltd.,  
T-36 / 37 / 38, MIDC Bhosari,  
Pune 411 026  
India  
Phone: +91 20 27 12 73 22  
Fax: +91 20 27 12 73 23  
E-mail: ktr-in@ktr.com

### Italy

KTR Kupplungstechnik GmbH  
Sede senza rappresentanza stabile sul  
Territorio Nazionale,  
Via Fermi, 25  
I-40033 Casalecchio di Reno (BO)  
Phone: +39 051 613 32 32  
Fax: +39 02 700 37 570  
E-mail: ktr-it@ktr.com

### Japan

KTR Japan Co., Ltd.  
3-1-23 Daikaidori  
Hyogo-ku, Kobe-shi  
652-0803 Japan  
Phone: +81 7 85 74 03 13  
Fax: +81 7 85 74 03 10  
E-mail: ktr-jp@ktr.com

KTR Japan - Tokyo Office  
1-11-6, Higashi-Ueno, Taito-Ku,  
Tokyo 110-0015 Japan  
(Takeno-building, 5F)  
Japan  
Phone: +81 3 58 18 32 07  
Fax: +81 3 58 18 32 08

### Korea

KTR Korea Ltd.  
# 101, 978-10, Topyung-Dong  
Guri-City, Gyeonggi-Do  
471-060 Korea  
Phone: +82 3 15 69 45 10  
Fax: +82 3 15 69 45 25  
E-mail: ktr-kr@ktr.com

### Netherlands

KTR Benelux B. V.  
Postbus 87  
NL-7550 AB Hengelo (O)  
Adam Smithstraat 37  
NL-7559 SW Hengelo (O)  
Phone: +31 74 2505526  
Fax: +31 74 2502466  
E-mail: ktr-nl@ktr.com

### Norway

KTR Kupplungstechnik Norge AS  
Fjellbovegen 13  
N-2016 Frogner  
Phone: +47 64 83 54 90  
Fax: +47 64 83 54 95  
E-mail: ktr-no@ktr.com

### Poland

KTR Polska SP. Z. O. O.  
ul. Czerwone Maki 65  
PL – 30-392 Kraków  
Phone: +48 12 267 28 83  
Fax: +48 12 267 07 66  
E-mail: ktr-pl@ktr.com

### Portugal

KTR Kupplungstechnik GmbH  
c) Estartetxe, nº 5 – Oficina 218  
E-48940 Leioa (Vizcaya)  
Phone: +34 9 44 80 39 09  
Fax: +34 9 44 31 68 07  
E-mail: ktr-es@ktr.com

### Russia

KTR Privodnaya tehnika, LLC  
Sverdlovskaya Naberezhnaya 60,  
Litera A, Office 1-N  
195027 St. Petersburg  
Russia  
Phone: +7 812 495 62 72  
Fax: +7 812 495 62 73  
E-mail: mail@ktr.ru  
Internet: www.ktr.ru

### Spain

KTR Kupplungstechnik GmbH  
c) Estartetxe, nº 5 – Oficina 218  
E-48940 Leioa (Vizcaya)  
Phone: +34 9 44 80 39 09  
Fax: +34 9 44 31 68 07  
E-mail: ktr-es@ktr.com

### Sweden

KTR Sverige AB  
Box 742  
S - 191 27 Sollentuna  
Phone: +46 86 25 02 90  
Fax: +46 86 25 02 99  
E-mail: info.se@ktr.com

### Switzerland

KTR Kupplungstechnik AG  
Bahnstr. 60  
CH - 8105 Regensdorf  
Phone: +41 4 33 11 15 55  
Fax: +41 4 33 11 15 56  
E-mail: ktr-ch@ktr.com

### Taiwan

KTR Taiwan Ltd.  
1 F, No.: 17, Industry 38 Road  
Taichung Industry Zone  
Taichung  
Taiwan, R. O. C.  
Phone: +886 4 23 59 32 78  
Fax: +886 4 23 59 75 78  
E-mail: j.wu@ktr.com

### USA

KTR Corporation  
122 Anchor Road  
Michigan City, Indiana 46360  
USA  
Phone: +1 219 872 91 00  
Fax: +1 219 872 91 50  
E-mail: ktr-us@ktr.com

## KTR Kupplungstechnik GmbH

P.O. Box 1763  
D-48407 Rheine  
Phone: +49(0)5971 798-0  
Fax: +49(0)5971 798-698 and 798-450  
E-mail: mail@ktr.com  
Internet: www.ktr.com

Made for Motion

