

## Designing made easy! Extending the KTR 3D-SpaceCenter by TOOLFLEX®

# 5/2010

To support you in designing KTR provides you with an extensive selection of 3D models for your CAD system free of charge. You can dispose of data records for the following product ranges:

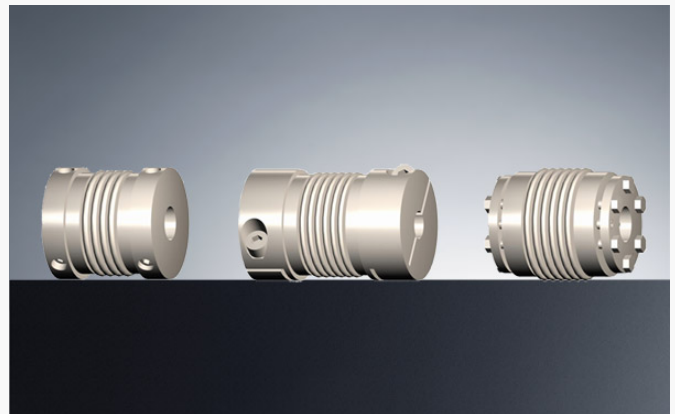
- ROTEX® torsionally flexible couplings
- ROTEX® GS backlash-free, torsionally flexible couplings
- BoWex® curved-tooth gear couplings®
- CLAMPEX® clamping sets
- Hydraulic components

We have included TOOLFLEX® metal bellow-type couplings in our KTR 3D-SpaceCenter recently. 3D models of types M, S and type KN are available.

Having logged in our KTR 3D-SpaceCenter once, you are allowed to choose between the following formats:

- IGES
- STEP AP203
- STEP AP214.

With the help of a clearly arranged interface you will find the right model by return. Afterwards you can click the requested data format and will be provided with the files selected as a ZIP file by e-mail soon afterwards.



You have not registered yet?

As a registered participant you can make use of all options offered by the 3D-SpaceCenter. You do not have to reproduce the components, but you can simply refer to KTR's CAD file. [You can enter the KTR 3D-SpaceCenter here.](#)

We would recommend:

Make use of this possibility to facilitate your work – it is definitely worthwhile!