

ROTEX® with power take-off spline A story of success

For advanced
drive
technology



2nd February 2009

For some time already KTR has offered ROTEX® couplings with power take-off spline. This programme was developed specifically for the mechanical auxiliary drives that can be connected of agricultural machines (here mainly tractors) and other mobile machines.

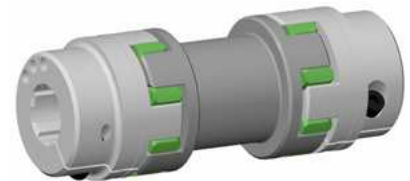
The power take-off shafts the connection of which is standardized according to DIN 9611 provide attachments of the tractor like, for example, mulching machines, self loading forage boxes or presses with mechanical power. Furthermore the ROTEX® coupling is driving, among others, pumps and compressors which are placed on automotive vehicles and attachments that are hauled.



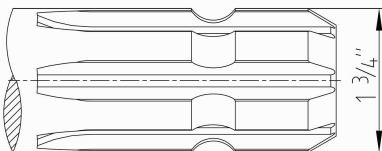
The couplings serve for saving the entire drive train. They are available as sizes 28 to 90 and are provided with the DIN 9611 spline in the standard size 1 3/8", 6 teeth in the lower performance range. Couplings for the higher performance range are provided with splines size 1 3/4", 6 teeth and 1 3/4", 20 teeth. All coupling hubs are available both as standard and clamping hub.

The following coupling sizes with power take-off spline are available from stock:

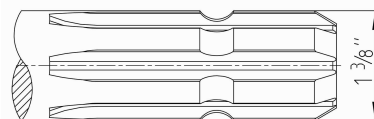
- ROTEX® 38, spline DIN 9611, 1 3/8", 6 teeth
- ROTEX® 42, spline DIN 9611, 1 3/8", 6 teeth
- ROTEX® 55, spline DIN 9611, 1 3/8", 6 teeth



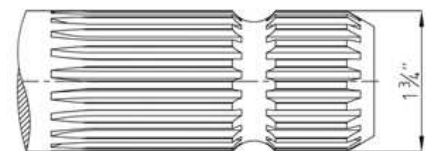
Other sizes are available on request. An extension of the stock programme is being scheduled.



spline 1 3/4", 6 teeth



spline 1 3/8", 6 teeth



spline 1 3/4", 20 teeth

Technical data:

- Suitable for power take-off speeds of 540/750/1000/1400 RPM
- Performance range up to 250 kW/ 340 HP (ROTEX® 90 with spider 64 Sh-DF)
- Coupling hubs made from high-quality material steel S355 J2G3 (ST52-3)
- Also available as a double-cardanic coupling, as an alternative to a short cardan shaft
- Maintenance-free
- Damping vibrations
- Axial plug-in
- Compact design, high performance

ROTEX® with power take-off spline between power take-off stub and hydraulic pump (double-cardanic design)



Please contact Mr. Stefan Ahlert if you require any further information on ROTEX® with power take-off spline:

Phone: + 49 5971 798-327

E-Mail: s.ahlert@ktr.com